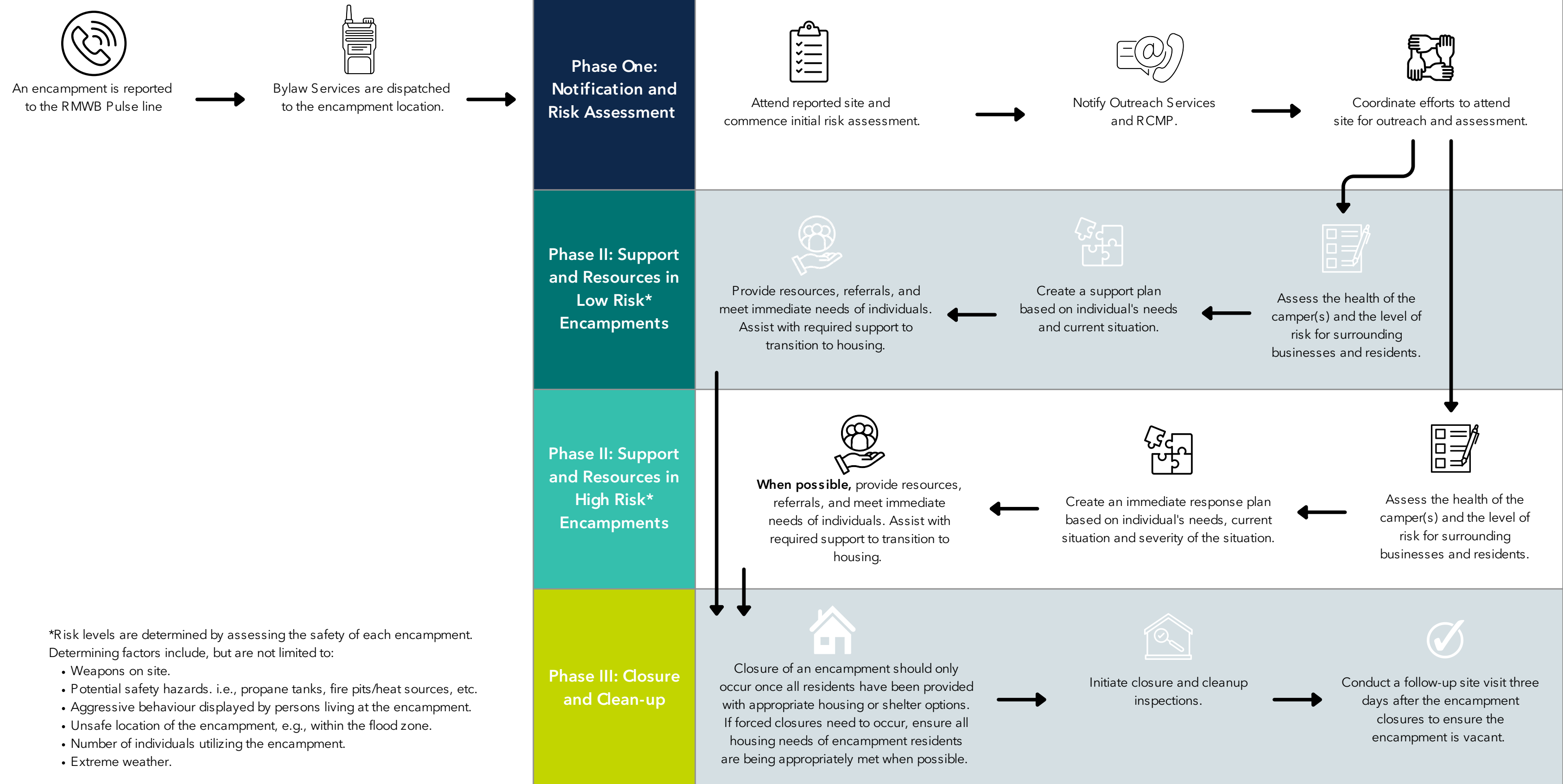


Community Encampment Response Strategy



*Risk levels are determined by assessing the safety of each encampment. Determining factors include, but are not limited to:

- Weapons on site.
- Potential safety hazards. i.e., propane tanks, fire pits/heat sources, etc.
- Aggressive behaviour displayed by persons living at the encampment.
- Unsafe location of the encampment, e.g., within the flood zone.
- Number of individuals utilizing the encampment.
- Extreme weather.