

Everyone Counts

KEY FINDINGS

* **43%** were age **25** to **44** years.

* **6%** came to Canada as an immigrant or refugee.

* **7%** self-identified as part of the 2SLGTBQI+ community.

* **28%** were staying in an emergency shelter and **23%** in a domestic violence shelter.

* **22%** had experienced homelessness for the first time within the past year.

* The average number of consecutive days individuals experienced homelessness in the past 12 months was **242 days** or roughly **8 months**.



162

people were identified as homeless.



The highest self-identified gender demographic was male at **50%**.



44%

self-identified as Indigenous or having Indigenous ancestry



13%

reported no stable source of income.



63%

had stayed in an emergency shelter in the past 12 months.

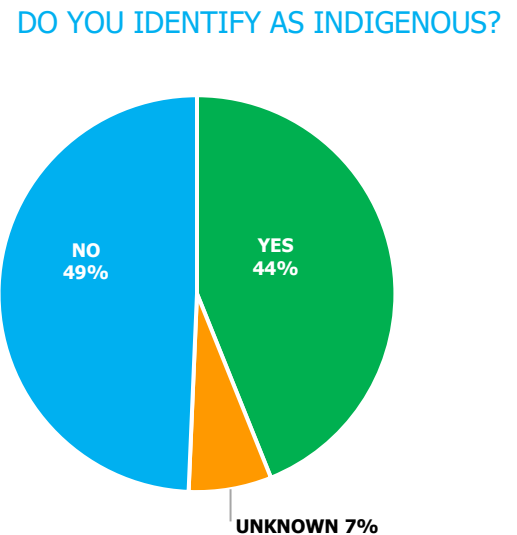
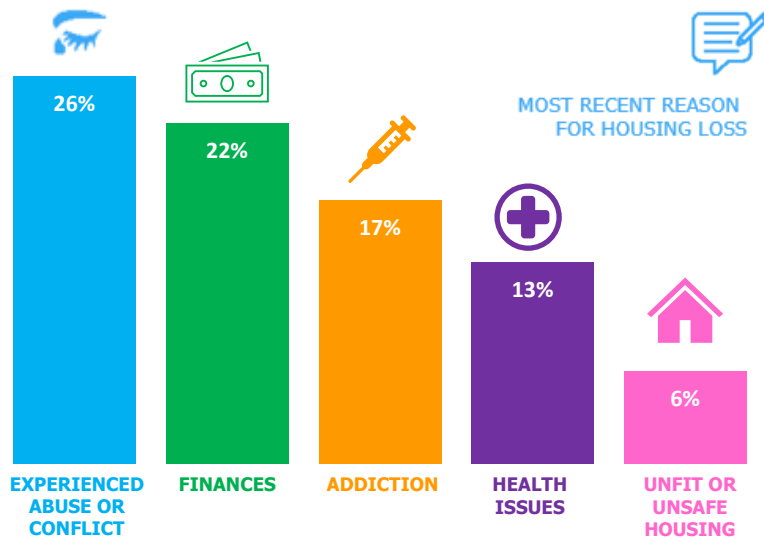
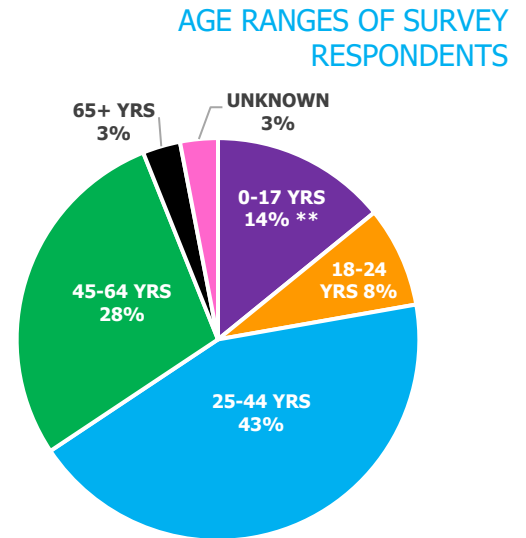
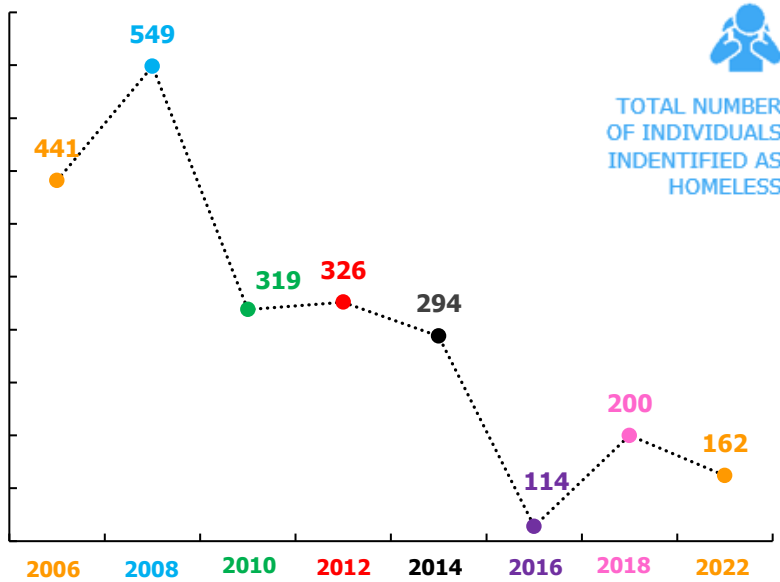


40%

moved to the region as they had secured or were seeking employment.

With funding from Infrastructure Canada and in partnership with the 7 Cities on Housing and Homelessness (Calgary, Grande Prairie, Lethbridge, Edmonton, Medicine Hat, Red Deer, and Fort McMurray), the Regional Municipality of Wood Buffalo carried out a Point-in-Time (PiT) Count in the urban service area.

The 2022 PiT Count was completed throughout the streets of Fort McMurray on the evening of September 26, 2022, from 7 p.m. to 11 p.m. An additional enumeration count was conducted in facilities that served the homeless population that night and the following day on September 27, 2022.



A report was submitted to the Government of Canada and will be included as part of their national statistics on homelessness.

PiT Count results will be used as one of the indicators in evaluating the Municipality's continual progress to reach Functional Zero within the region. Regional findings will be presented to the Homelessness Initiatives Strategic Committee (HISC) and will help determine the most effective and appropriate resources to provide funding resources.

Where possible, statistics include data from both surveys and facility enumeration. However, due to the limited demographics captured with enumeration, most statistics are from surveys only.

** Individuals aged 0-17 years were captured through enumeration as an accompanied minor staying at a facility. Only individuals over the age of 18 completed a survey.