



COMMUNITY EMERGENCY MANAGEMENT PLAN (CEMP)



FORT MCKAY




Contents

Risk Matrix	3
Community Hazards.....	4
Early Notification	4
Community Identified Communications.....	4
Municipal Communications	5
Languages Spoken.....	5
Vulnerable Persons Registry Plan	6
Evacuation Plan Procedures	7
Emergency Social Services	11
Community Map	12



Risk Matrix

The Disaster Risk Matrix below represents the likelihood and severity of the hazards identified in the Regional Municipality of Wood Buffalo (RMWB). The arrows represent the potential influence of climate change on the risk/hazard event's likelihood.

 REGIONAL MUNICIPALITY OF WOOD BUFFALO			2020 RMWB Disaster Risk Matrix					Effective October 1, 2020
Risk Treatment Considerations								
	Extreme Risk	Eliminate/Immediate Risk Treatment. These are extreme risks, unacceptably high, driven by relatively high likelihood and consequences. Immediate risk treatment required. Monitor rigorously.						
	High Risk	Mitigate. These are high risks and warrant management action to reduce the likelihood or consequence of the risk. High priority risk treatment required. Monitor closely.						
	Moderate Risk	Accept or Mitigate to ALARP (as low as reasonably practicable). These are moderate risks and may be relatively well understood and managed through the application of control measures or counter measures. Some risk treatment required to reduce to lower levels. May develop mitigation controls and/or contingency plans.						
	Low Risk	Accept. Low risks are common place and should be monitored and accepted. Additional risk treatment not likely required.						
	Very Low Risk	Accept. Risk events do not require further consideration.						
Likelihood Ranking <i>Likelihood Ranking Score</i>			Very Low 1	Low 2	Moderate 3	High 4	Very High 5	
<i>Likelihood Description</i>			May only occur in exceptional circumstances. Has occurred in last 20 years	May occur and has occurred in last 10 years	Has occurred once within last 5 years	Has occurred twice in last 5 years	Has occurred 3 or more times in last 5 years	
Severity	Catastrophic	5 10+ Fatalities > 100 Displaced Major infrastructure damages Long-term economic, social, and environmental impact	Tailings Dam Dyke Failure →					
	Major	4 5 - 10 Fatalities 25 - 50 Displaced Major infrastructure damages Short-term & widespread economic, social, and environmental impact	Significant MVA Pandemic Influenza →	Major Pipeline Release	Ice Jam Flooding ?	WUI Wildfire →		
	Moderate	3 <5 Fatalities >10 Injured 10 - 25 Displaced Widespread infrastructure damages Long-term and localized economic, social, and environmental impact		Terrorist Attack Industrial Explosion	DG Release Fort Chip Access → Water Availability → Train Derailment Aviation Accident	Slope Instability →		
	Minor	2 0 Fatalities <10 Injured 5 - 10 Displaced Minor infrastructure damages Short-term and localized economic, social, and environmental impact	Labour Disruption	Utilities Disruption Critical Infrastructure Failure →	Severe Winter Storm → H2S Release Major Structural Fire	Severe Summer Storm → Air Contamination	Cyber Attack	
	Insignificant	1 0 Fatalities <5 Displaced Minor infrastructure damages Minor economic, social, and environmental impact						



Community Hazards

The table below illustrates the top 3 community specific hazards based the 2020 Disaster Risk Matrix. The colour coding represents the risk/hazard event from Extreme Risk to Very Low risk.

Top 3 Hazards


Risk/Hazard Event	Severity	Likelihood	Climate Change Influence on Likelihood
Wildfire	Major	High	Increasing
Dangerous Goods Release	Moderate	Moderate	N/A
Air Contamination	Minor	High	N/A

Early Notification

It is critical to disseminate emergency information to residents. When possible, after the risk assessment, early notification should be given to identified vulnerable sectors allowing vulnerable populations the extra time needed to evacuate – i.e. during an evacuation alert through the Alertable app. Download the Alertable app to receive critical emergency alerts for your community.

Community Identified Communications

It is critical to disseminate emergency information to residents. The following table illustrates the best to least useful communication method identified by the community of Fort McKay:

BEST  LEAST USEFUL	<u>Door-to-Door</u>
	<u>Métis Electronic Billboard Sign</u>
	<u>Landline/Cell Phone (Call Tree)</u>
	<u>FMFN Radio Station (Fort McKay Radio)- “Fort McKay Radio Station”</u>
	<u>Social Media (Facebook):</u> <ul style="list-style-type: none"> • “Fort McKay Metis Community” (Page) • “Fort McKay First Nation” (Page) <p>*Information shall be shared onto community Facebook accounts from RMWB’s social media post*</p>



Municipal Communications

Municipally Led Communications	<u>Alertable App:</u> Download the Alertable app to receive critical emergency alerts for your community.
	<u>Social Media:</u>
	<u>Facebook:</u> <ul style="list-style-type: none"> • Regional Municipality of Wood Buffalo (Page) • Wood Buffalo RURAL Community Connection (Page) • RMWB Emergency Services (Page)
	<u>Twitter:</u> <ul style="list-style-type: none"> • @RMWoodBuffalo • @FM_EmergService
	<u>Municipal Website:</u> <ul style="list-style-type: none"> • www.rmwb.ca <p>* "Information shall be shared from RMWB's social media post and website*."</p>
	<u>Alberta Emergency Alert</u>

Languages Spoken

Languages Spoken	Primary: English.
	Secondary: <ul style="list-style-type: none"> • Dene, and • Cree.



Vulnerable Persons Registry Plan

Vulnerable Persons Registry	<p>Persons that qualify as a vulnerable person encompasses people who experience severe difficulty with:</p> <ul style="list-style-type: none"> • Mobility, vision or hearing. • Developmental/intellectual, cognitive, or mental health. • Residents who require electricity for life-sustaining equipment such as life support, oxygen, dialysis, etc. <p>For more detail on Vulnerable Persons Registry (VPR) visit Vulnerable Persons Registry - Regional Municipality of Wood Buffalo (rmwb.ca) and/or contact the RMWB VPR Coordinator through PULSE at 780-743-7000.</p>
Procedures	<ol style="list-style-type: none"> 1. The VPR Coordinator communicates to the VPR registrant that they are being evacuated by an emergency responder. 2. If evacuation is required out of the community, VPR registrant will be taken to the Identified evacuation transport location (bus, airport or boat launch) for further transportation out of the community. 3. Upon arriving in Fort McMurray, they will be transported to the Northern Lights Hospital or to the designated Accommodation Facility, depending on the situation (if applicable). 4. The VPR Coordinator will confirm that the VPR registrant has been safely evacuated and accommodated.
Evacuation	<p>In the event an evacuation ordered is issued by local authorities, the RMWB has identified the needed resources for a bus assisted evacuation. Specific resources will be allocated based on the unique needs of the emergency incident/event.</p>
Muster Point	<p>Fort McKay First Nation Band Office.</p> <p>*Note: Additional muster points can be located at the Elder Care Facility and Métis Office parking lot (if required) *.</p>

COVID-19	<p>Due to COVID-19, any registrant on the Vulnerable Persons Registry (VPR) Program will:</p> <ul style="list-style-type: none"> • Reduce bus, aircraft, and boat capacities to adhere to physical distancing (6 ft.) recommendations (as applicable), • Bus drivers, pilots, boat drivers and evacuees will wear masks (unless exempt), and • Be directly transported to their destination (Accommodation Facility) skipping the Registration Centre to reduce their risk of infection and spread of the virus.
-----------------	---



Evacuation Plan Procedures

Evacuation Plan (Bus-assisted)

The following evacuation plan is a bus-assisted evacuation, designed for the community and not specific buildings (i.e. schools, arena's, etc.) and it is based on:

Total: Evacuation of 221 residents requiring evacuation assistance on the Hamlet and First Nation Reserve:

- Approx. 41 residents on the HAMLET (70% of Hamlet Population)
- Approx. 180 residents on RESERVE (30% of the First Nation Reserve Population)

Evacuation procedures, when an evacuation order is given by local authorities':

- If you have your own vehicle, follow the evacuation route outlined in the community map to the designated Registration Centre/ muster point.
- If you do not have a vehicle, go to any point on "Evacuation Bus Route" (see map) for pickup and transport to the designated Registration Centre/ muster point.
- From the Registration Centre/ muster point residents will be organized for transport out of the community (**if required**).

COVID-19

Due to COVID-19, bus-assisted evacuation will:

- Reduce bus capacities to adhere to physical distancing (6 ft.) recommendations (as applicable),
- Bus drivers and evacuees will wear masks (unless exempt),
- When buses arrive at Registration Centre/muster point, evacuees must remain on buses, and
- Emergency Social Services (ESS) volunteers and/or staff will register evacuees through online or drive-thru registration to not create mass gathering at Registration Centre and reduce the risk of Infection and spread of the virus.

Evacuation Time

Estimated evacuation times are as follows:

- Create a traffic control plan, coordinate resources and stage resources - **2 hours**.
- Evacuate - **2 hours**.
- Approx. total evacuation time- **4 hours**.

COVID-19

Due to COVID-19 safety precautions, approximate evacuation times might increase.



Muster Point (see map)	Fort McKay First Nation Band Office *Note: Additional muster points can be located at the Elder Care Facility and Métis Office parking lot (If required) *.
Bus Routes (see map)	Bus route A: Hamlet and southern portion of the Reserve. Bus route B: Hamlet and northern portion of the Reserve. Specialized bus route: As determined by specialized residents needs and locations.
Evacuation Routes (All roads within the subdivision can be used as evacuation routes within the community. AB-63 is the main evacuation route out of the area. (see map)	Primary: Commence on Fort McKay Road to AB-63. Secondary: Commence on Fort McKay Road and travel north to the unnamed connector. Travel on the unnamed connector to CNRL Horizon Highway. Travel on the CNRL Horizon Highway to Fort McKay Road. Travel on Fort McKay Road to AB-63.

Evacuation Plan (Airplane-assisted)	<p>The following evacuation plan is for an airplane-assisted evacuation:</p> <p>Total: Evacuation of 659 residents:</p> <ul style="list-style-type: none"> • Approx. 59 residents on the HAMLET • Approx. 600 residents on the RESERVE <p>Procedures:</p> <ul style="list-style-type: none"> • At the muster point after collection buses are filled, they will proceed to CNRL's security gate, • Upon arrival to CNRL's security gate, CNRL security will allow entry and direct the buses to airport for drop-off or the camps for sheltering, and • At the airport or camp, flight capacities will be identified, and CNRL Horizon Airport resource(s) shall organize groups of residents for plane evacuation transport off the site (If required). <p>*Note: For residents that self-evacuate to CNRL Horizon site, security will need to allow them entry and provide an escort to the final location (CNRL Horizon Airport for air evacuation or CNRL Horizon camps for emergency sheltering). *</p>
Evacuation Routes (‘Evacuation Routes’ in this context is to the muster point)	<p>Primary: Commence on Fort McKay Road to AB-63.</p> <p>Secondary: Commence on Fort McKay Road and travel north to the unnamed connector. Travel on the unnamed connector to CNRL Horizon Highway. Travel on the CNRL Horizon Highway to Fort McKay Road. Travel on Fort McKay Road to AB-63.</p>



COVID-19	<p>Due to COVID-19, airplane-assisted evacuation will:</p> <ul style="list-style-type: none"> • Reduce bus and airplane capacities to adhere to physical distancing (6 ft.) recommendations (as applicable), • Pilots, bus drivers, and evacuees will wear masks (unless exempt), • Upon arrival to designated location outside of Fort McKay, evacuees will be guided to buses to be transported to Registration Centre or Accommodation Facilities, • Evacuees must remain on buses, and • Emergency Social Services (ESS) volunteers and/or staff will register evacuees through online or drive-thru registration to not create mass gathering at Registration Centre and reduce the risk of infection and spread of the virus.
-----------------	--

Muster Point	<p>Fort McKay First Nation Band Office.</p> <p>*Note: Additional muster points can be located at the Elder Care Facility and Métis Office parking lot (If required) *.</p>
Evacuation Time	<p>Estimated evacuation times to muster point are as follows:</p> <ul style="list-style-type: none"> • Create a traffic control plan, coordinate resources and stage resources -2 hours. • Evacuate to muster point- 2 hours. • Approx. total evacuation time- 4 hours. • CNRL Horizon Airport from Fort McKay- approx. 27 km.

Evacuation Plan (Boat-assisted)	<p>The following evacuation plan is for a boat-assisted evacuation:</p> <p>Total: Evacuation of 659 residents:</p> <ul style="list-style-type: none"> • Approx. 59 residents on the HAMLET. • Approx. 600 residents on the RESERVE. <p>Procedures:</p> <ul style="list-style-type: none"> • At muster point residents will be organized and put onto buses, • When boat capacities are identified, and water resources arrive, residents will be transported to boat launch, and • At the boat launches residents must stay on buses until directed onto designated boat for transportation out of community. <p>*Note: Evacuees are not to go directly to the boat launches – they MUST go to the muster point first. *</p>
EVACUATION ROUTES	<p>Primary:</p> <p>Commence on Fort McKay Road to AB-63.</p>



('Evacuation Routes' in this context is to the muster point.)	<p>Secondary:</p> <p>Commence on Fort McKay Road and travel north to the unnamed connector. Travel on the unnamed connector to CNRL Horizon Highway. Travel on the CNRL Horizon Highway to Fort McKay Road. Travel on Fort McKay Road to AB-63.</p>
---	---

<p>COVID-19</p>	<p>Due to COVID-19, boat-assisted evacuation will:</p> <ul style="list-style-type: none"> • Reduce bus and boat capacities to adhere to physical distancing (6 ft.) recommendations (as applicable), • Bus drivers, boat drivers, and evacuees will wear masks (unless exempt), • Upon arrival to Fort McMurray, evacuees will be guided to buses to be transported to Registration Centre or Accommodation Facilities, • Evacuees must remain on buses, and • Emergency Social Services (ESS) volunteers and/or staff will register evacuees through online or drive-thru registration to not create mass gathering at Registration Centre and reduce the risk of infection and spread of the virus.
------------------------	--

<p>Muster Point</p>	<p>Fort McKay First Nation Band Office</p> <p>*Note: Additional muster points can be located at the Elder Care Facility and Métis Office parking lot (If required) *.</p> <p>*Note: From Fort McKay First Nation Band Office, residents will be organized and put onto buses to the boat launches for future transport out of the community. *</p>
<p>Evacuation Time</p>	<p>Estimated evacuation times to muster point are as follows:</p> <ul style="list-style-type: none"> • Create a traffic control plan, coordinate resources and stage resources -2 hours. • Evacuate to muster point- 2 hours. • Approx. total evacuation time- 4 Hours. <p>Evacuation via boat times:</p> <ul style="list-style-type: none"> • To coordinate and transport further resources to the Fort McKay boat launches – minimum 2.5 hours. • Travel time for each shuttle trip to the boat launch (including return but not including traffic time, loading and unloading time)- 5 minute.

<p>COVID-19</p>	<p>Due to COVID-19 safety precautions, approximate evacuation times might increase.</p>
------------------------	---

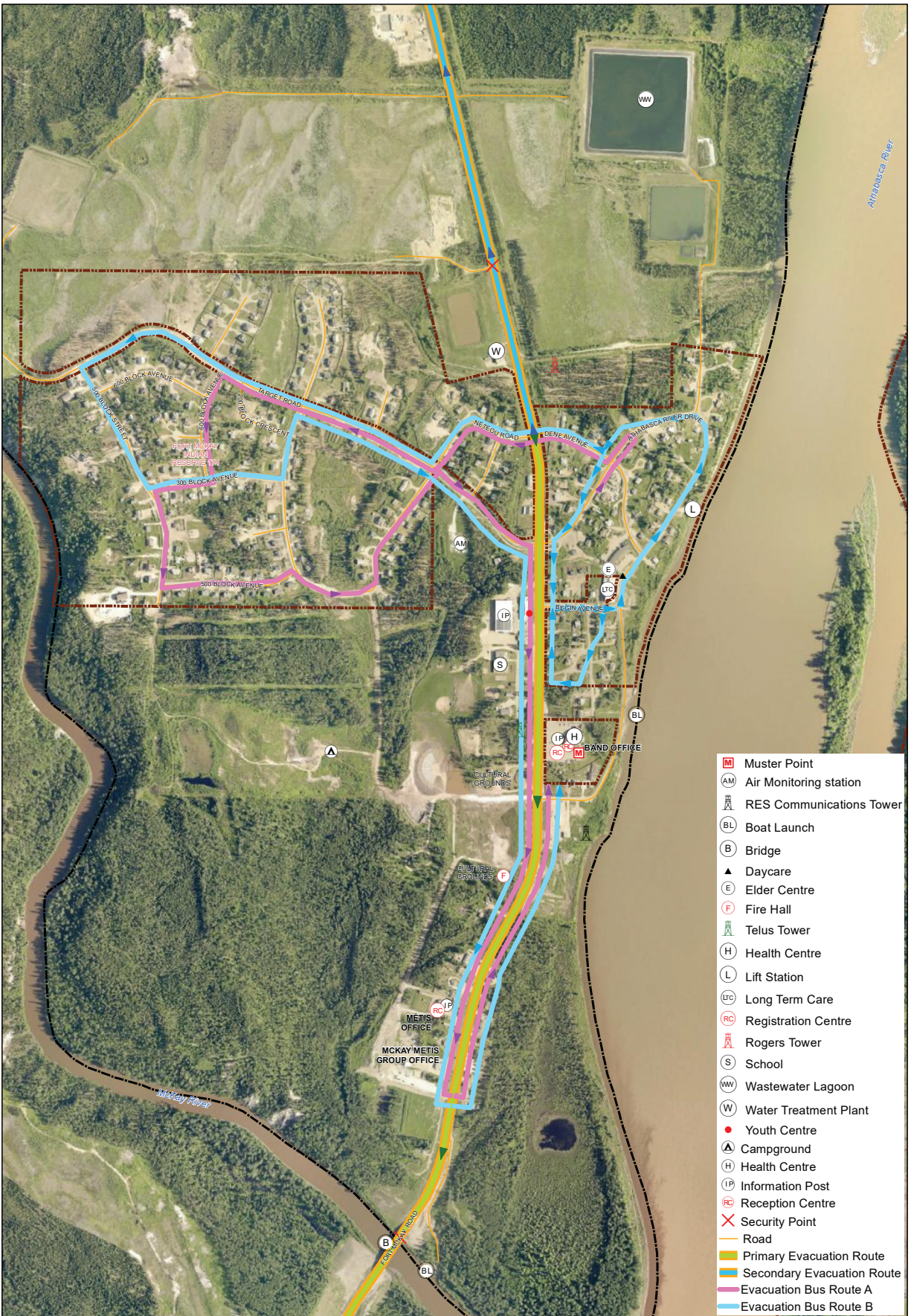


Emergency Social Services

Accommodation Facilities	Establishment and locations of Accommodation Facilities will depend on the complexity of the disaster event and the location of the affected community. Emergency Social Services (ESS), has identified and made arrangements with several facilities that are suitable for use depending on the nature and location of the disaster event. ESS have an “Emergency Social Services Plan” and “Pet Care Plan” for a detailed overview of ESS operating procedures.
---------------------------------	---

Registration Centre's					
Fort McKay	Resource	Location	Registration Centre	Pre-positioned supplies	Trained Volunteers
	Fort McKay Métis Community Association Office	36 McKay Road	YES	YES	NO
South Resources					
Fort McMurray	Resource	Location	Registration Centre	Pre-positioned supplies	Trained Volunteers
	MacDonald Island Rec Centre	1 C.A. Knight Way	YES	YES	YES
	Frank Lacroix Arena	155 Beaconwood Road	YES	NO	YES
	Royal Canadian Legion	9317 Huggard Street	YES	NO	YES

COVID-19	Due to COVID-19 safety precautions, Emergency Social Services (ESS) volunteers and/or staff will register evacuees through online or drive-thru registration to not create mass gathering at Registration Centre and reduce the risk of infection and spread of the virus.
-----------------	--



- Muster Point
- (AM) Air Monitoring station
- ⬆ RES Communications Tower
- (BL) Boat Launch
- (B) Bridge
- ▲ Daycare
- (E) Elder Centre
- (F) Fire Hall
- ⬆ Telus Tower
- (H) Health Centre
- (L) Lift Station
- (UTC) Long Term Care
- (RC) Registration Centre
- ⬆ Rogers Tower
- (S) School
- (WW) Wastewater Lagoon
- (W) Water Treatment Plant
- Youth Centre
- ▲ Campground
- (H) Health Centre
- (IP) Information Post
- (RC) Reception Centre
- X Security Point
- Road
- Primary Evacuation Route
- Secondary Evacuation Route
- Evacuation Bus Route A
- Evacuation Bus Route B

FORT MCKAY

