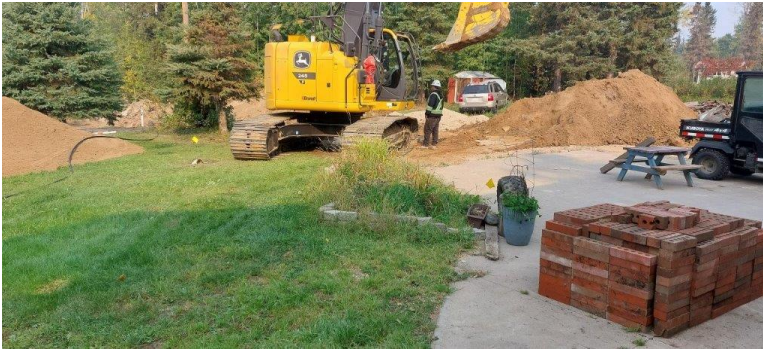


# SAPRAE CREEK NEWS



**JULY 2026**

## Updates to the Rural Water and Sewer Servicing (RWSS) connection program



Great news – at the May 19, 2026 Council Meeting in Anzac, Council approved an extension to the Rural Water and Sewer Servicing (RWSS) connection program period.

The eligibility period has now been extended **from five to seven years**.

### What does that mean for residents in Saprae Creek Estates?

If you haven't connected to piped sewer services, you now have until **June 30, 2028** to take advantage of the significant savings offered through the RWSS program.

As of Dec. 2025, **225 homes** in Saprae Creek Estates have already connected to piped sewer services.

### What happens if I connect after the program period has ended?

After the deadline of June 30, 2028, you will be responsible for the full connection cost, which can be anywhere between \$40,000 to \$110,000 as opposed to the lower cost of \$10,000 with 0% interest available now. The full cost of trucked sewer pickups will also be your responsibility if your home isn't connected by the deadline.

### How can I get started?

- Review the RWSS Homeowners Guide and important information at [rmwb.ca/rwss](http://rmwb.ca/rwss).
- Contact a certified contractor to discuss what the work connecting your home will entail. A contractor quote must be submitted for approval as part of your application. A list of certified contractors is available on the RMWB website.
- Your Municipal tax and utility accounts must be in good standing. Outstanding balances must be paid before your RWSS application can be approved.

### Need help?

Connecting your home to piped water and sewer may seem complicated, but we're here to help guide you through the process. Call 780-743-7000 to learn more, ask questions, and get help starting your application.

Find everything you need to know about the Rural Water and Sewer Servicing Program, including more details on how to apply at [rmwb.ca/rwss](http://rmwb.ca/rwss).

# RURAL WATER & SEWER SERVICING RESIDENTIAL CONNECTION PROGRAM

Summer construction season is underway! Applications are still being accepted for program activities for the 2026 connection season.

The Rural Water and Sewer Servicing (RWSS) connection program provides piped water and sewer services to properties in Anzac, Conklin, Gregoire Lake Estates, Janvier and Saprae Creek Estates. This includes residential, small commercial, light industrial, institutional and vacant properties.

## Steps to Connect

### 1. APPLY

Download the application package at [rmwb.ca/rwss](http://rmwb.ca/rwss) and submit completed forms to [rwss@rmwb.ca](mailto:rwss@rmwb.ca). Application packages are also available at rural contact offices. You may authorize a certified contractor to apply on your behalf.

### 2. ELIGIBILITY REVIEW

Once your application is received, it will be reviewed by the RWSS Team to confirm property ownership (on title) and that all RMWB tax and utility accounts are in good standing.

### 3. CHOOSE A CONTRACTOR

Select a certified installer from the Alberta Municipal Affairs Private Sewage System Installer Certification List. Request a quote and discuss the scope of work.

Find local certified contractors at [rmwb.ca/rwss](http://rmwb.ca/rwss).

# Rural Water & Sewer Service

## Hiring a certified contractor

A certified contractor must be selected from the [Alberta Municipal Affairs Private Sewage System Installer Certification List](#).

The following local contractors have been certified by Alberta Municipal Affairs as of July 2024:

Contractor	Contact information
B Mac Underground Services Ltd.	780-742-9848
Best Choice Plumbing, Heating and Wastewater Solutions	780-799-6267
Call First Plumbing & Heating	780-880-4726
Consun Contracting Ltd.	780-743-3163
H Wilson Industries (2010) Ltd.	780-743-1881
NC Transport & Equipment	780-713-1169
Parker Drainage and Waterproofing	780-799-0723
Qalipu Enterprises	780-598-4933
Rob Ryan Construction Inc.	780-799-6434
SENA Constructors Inc.	780-747-9664
Sureway Construction Management Ltd.	780-743-4788
Wellingdale Group Inc.	780-607-1431
Wood Buffalo Plumbing & Heating Ltd.	780-974-0521

*Please note, this list is for informational purposes only. The RMWB is not recommending or endorsing these businesses. Any contract you enter with a certified contractor is strictly at your own risk.*



## Check your mail - property tax notices are out

The Municipality mailed out 2026 property tax notices to all residential and commercial property owners.

It is the responsibility of property owners to contact the municipality if they do not receive their notice. Late payment penalties will be applied to any outstanding balance of property taxes after June 30.

In addition to mail, there are a variety of ways to pay your property taxes:

- At a bank/financial institution
- Through online banking
- [RMWB's Online Payment Portal](#)
- In-person at a municipal office

The RMWB also offers the Tax Installment Payment Plan (TIPP) for monthly property tax payments for those without taxes included in their mortgage. For the full list of options and payment details, visit [rmwb.ca/taxes](http://rmwb.ca/taxes).

Learn more at [rmwb.ca/taxes](http://rmwb.ca/taxes) or contact Pulse at **780-743-7000** or Toll Free at **1-800-973-9663**.

### Rural non-residential small business property sub-class

Don't forget: Business owners that meet the criteria outlined in the provincial regulation can apply to receive a 25 per cent reduction from the rural non-residential municipal tax rate. Visit the RMWB website for more details and to apply.

# 2026 Annual Acquisition Program



REGIONAL MUNICIPALITY  
OF WOOD BUFFALO

The Regional Municipality of Wood Buffalo invites professional artists with a regional connection to submit existing artwork for consideration for purchase.

Selected artworks will be placed into the Public Art Collection and displayed in municipal and public spaces throughout the region.

Submit artwork by July 30, 2026.

Learn more and submit artwork to [rmwb.ca/BuyMyArt](https://rmwb.ca/BuyMyArt)



## Stay up to date on services, news, and projects in your community!

You may have noticed a refreshed look for **rmwb.ca** last month.



The new website provides a more reliable and user-friendly way to keep informed and connected.

Key changes include an improved mobile-friendly design and enhanced accessibility.

We've also streamlined the subscription process.

### News, alerts, updates and more

Stay ahead of what's happening around your neighbourhood: get timely news delivered straight to your email inbox by subscribing to municipal updates.

Pick and choose the categories you're interested in:

- Municipal News (News Releases)
  - Emergency Alerts
  - Winter Maintenance Zones
  - Construction: Fort McMurray - North of the Bridge
  - Construction: Fort McMurray - South of the Bridge
  - Construction: Rural Communities - North of Fort McMurray
  - Construction: Rural Communities - South of Fort McMurray
  - Fort Chipewyan Winter Road
  - La Loche Winter Trail
  - Legislated Public Notices
  - River Breakup Community Updates
- Subscribe for updates at **rmwb.ca/subscribe**.

If you're having trouble finding municipal information on our website, please contact Pulse at 780-743-7000 or [rmwb.ca/pulse](http://rmwb.ca/pulse).

# Rural Sharing Network

Connecting services, strengthening rural communities

The Rural Sharing Network brings together community organizations and service providers to build relationships, share information and collaborate on services for rural residents across the RMWB.

## By participating, you can:

- Learn about programs and services available in each rural community
- Build connections with other agencies and community organizations
- Help identify community needs and service gaps
- Work together to improve supports for rural residents

## Who can join?

- Non-profit and social profit organizations
- Government and municipal services
- Other service providers working in RMWB

## Want to get involved?

If you represent a service provider or community organization in the RMWB that would like to join the Rural Sharing Network, please contact:

**Aimee McCamon**, Rural Relations Coordinator

Email: [aimee.mccamon@rmwb.ca](mailto:aimee.mccamon@rmwb.ca)



REGIONAL MUNICIPALITY  
OF WOOD BUFFALO



# Sunflower Mix

Free packs of the Sunflower Mix – Helianthus ‘Autumn Beauty’ are available from Wood Buffalo Communities in Bloom while quantities last.

Wood Buffalo Communities in Bloom  
**2026 SEED OF THE YEAR**

**Celebrate the year of the Therapeutic Gardening! Plant, grow and connect with the healing power of nature. Enjoy the vibrant shades of gold, orange, bronze and burgundy sunflowers.**

[rmwb.ca/CIB](http://rmwb.ca/CIB)



REGIONAL MUNICIPALITY  
OF WOOD BUFFALO

# Remember to have your bins out by 7:30 a.m. on your collection day

Stay on track with ease —check the [garbage and recycling calendar](https://www.rmwb.ca/collectioncalendar) for all collection dates visit [rmwb.ca/collectioncalendar](https://www.rmwb.ca/collectioncalendar).



## What you need to know

- ✓ **Set your bins out on time** – Place them at the curb by **7:30 a.m.** on collection day.
- ✓ **Remove them the same day** – Bins **must not** be left on the street overnight.

## Winter bin placement tips

Make sure your bins are placed in a clear, accessible spot. Bins blocked by snow, ice, or other obstacles may not be collected.

- ❄ Place bins **in front** of snowbanks, never on top or behind.
- ❄ Keep **one-foot** in-between bins and keep them **3 feet** from vehicles.
- ❄ Ensure bins are **firmly closed**.

Thank you for helping keep the community clean and running smoothly!



# WOOD BUFFALO

## RESTORATIVE JUSTICE

### What is it?

- A voluntary program that offers a safe, respectful way to promote healing after harm has occurred.
- Allows offenders to take responsibility for their actions and allows the community to see its role in contributing to reconciliation.
- Provides an opportunity for everyone involved to have a voice and determine actions and outcomes to ensure accountability.

### Learn more:

Restorative Justice Contact Information:

- Phone: 780-788-4253
- Toll Free: 1-888-788-4250
- Email: [restorative.justice@rmwb.ca](mailto:restorative.justice@rmwb.ca)

### Get involved.

*We need committed volunteers to help! Please contact us.*

## Community Policing - presentations available

The Wood Buffalo Community Policing Unit has a great list of presentations they can bring to communities when requested.

### Available presentations

- A Career in the RCMP – Gr 7-Adult
- ATV Safety – Gr 10-Adult
- Being a Good Citizen – ECDP-Gr 6
- Being a Mountie - ECDP-Gr 6
- Bicycle Safety - ECDP-Gr 6
- Bullying (includes Cyberbullying) – ECDP-Gr 9
- Consent – Gr 7-Adult
- Crime Scene Investigations – ECDP-Adult
- Drug Awareness
  - For Teens (cannabis, alcohol, vaping and opioid awareness) - Gr 7-12
  - For Adults (includes clandestine drug labs, methamphetamines, opioids)
- Fraud & Identity Theft - Adult
- Halloween Safety – ECDP-Gr 6
- History of the Force – Gr 4-Adult
- Online Safety (includes Cyberbullying) – ECDP-Gr 6
- Online Safety (include Cyberbullying, Social Media & the Law) – Gr 7-Adult
- Personal Safety – ECDP-Adult
- Police & Canadian Law (for New Canadians) – Gr 10-Adult
- Property Crime Prevention – Adult
- Restorative Justice – Gr 9-Adult
- Senior Safety – Adult
- Sexting – Gr 7-Adult
- Traffic
  - Impaired Driving (Alcohol & Drugs) – Gr 9-Adult
  - Distracted Driving – Gr 9-Adult
  - Winter Driving – Gr 9-Adult
- Unhealthy Relationships/Dating Violence – Gr 7-Adult
- Youth Criminal Justice Act – Gr 7-Adult



**Want a presentation?** Contact us if you'd like a presentation for your group, class or community at [communitypolicing@rmwb.ca](mailto:communitypolicing@rmwb.ca) or call 780-788-4040 and ask for the Community Policing Coordinator.

## Emergency Social Services (ESS)

ESS provides individuals or families with supports when they are displaced due to an emergency. Registration centres or other evacuation sites are set up to register evacuees and provide immediate basic needs. This support is available to provide a safe place for evacuees to plan their next steps as they transition to recovery.

Registration centres may provide the following services:

- Food/water
- Shelter
- Clothing
- First Aid/emotional support
- Family reunification
- Animal care and rescue assistance



To learn more about ESS, or to join the ESS Team, scan the QR code below:

## VPR

Emergencies happen. If you are a vulnerable person living in the region, you may be at greater risk during an emergency.



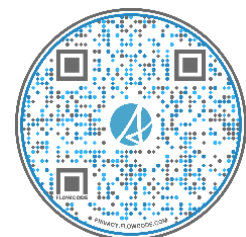
**Vulnerable  
Persons  
Registry**

The Vulnerable Persons Registry (VPR) is a service that improves the safety of vulnerable residents living at home.

This is done by communicating directly with registrants during emergencies and by sharing key information to first responders about individuals on the VPR. Click [here](#) to find out more about the VPR.

## MAERS

The MyAlberta Emergency Registration System is available to all residents of Alberta as a tool to assist during an evacuation or emergency. Albertans can register themselves and their family members in advance of an emergency using their MyAlberta Digital ID. Click [here](#) or scan below to pre-register today.



## **NOTICE TO RURAL RESIDENTS**

### **Water and septic service reminders**

To allow water and septic delivery trucks access and to provide continuous service for all residents, please follow the requirements below:

- 1) **Basement water tanks or water tanks that are not visible:** All customers must have their volume posted in a visible place so water delivery contractor can see proper date and amount of water required (displayed in litres).
- 2) **Hanging branches and wires on driveways:** Make sure that delivery vehicles have a minimum 15 feet of clearance. All low hanging branches must be trimmed to prevent damage to trucks, and low hanging wires are to be raised.
- 3) **Provide clear access:** All vehicles/obstacles must be removed on driveways during the delivery schedule and the ensure the water delivery vehicle is able to drive within **15.24 meters** of the delivery point for water.
- 4) **Ensure pets are contained:** For the safety of contractors and pets, all dogs are to be tied up or inside your home, for service provider to access your property.
- 5) **Keep access points clear of snow and ice:** During winter months, keep driveways and pathways to water and septic hook ups, clear of snow and ice and thaw receivers and caps for hose access.
- 6) **Maintain cam-lock/hoses:** The winterization and maintenance of the cam-lock fitting and hoses is the responsibility of the home-owner. All cam-locks and hoses are to be drained and water to be removed to prevent freezing and breakage of cam-lock.
- 7) **Safety of septic tanks:** All septic tanks will be equipped with a “stinger” and an approved lid on the tank.
- 8) **Driveways:** If your driveway is soft (spring thaw), it is the homeowner’s responsibility to contact the RMWB to suspend delivery or to add a proper hose with the required cam-lock and extend down driveway to location of delivery.

**For more information:**

refer to the Water Utilities Management Bylaw (Bylaw No. 07/035) Part X

If you have questions or require any additional information, call the Pulse Line at 780-743-7000

# Step up in an emergency

## ***Be the Helping Hand When It Matters Most - Volunteer with the Emergency Social Services team***

Join a team that helps residents during an emergency or disaster.

- Build your knowledge, confidence, and experience.
- No experience required. Training will be provided.



### **RMWB.ca/ESSVolunteer**

For more information call:

- [780-743-7000](tel:780-743-7000)
- Toll Free [1-800-973-9663](tel:1-800-973-9663)

#### **What we do:**

Emergency Social Services helps people during large emergencies or incidents in the Municipality.

#### **Who we are:**

Volunteers, community partners, and municipal employees who work together under the Emergency Management Branch of Regional Emergency Services.





Wood Buffalo Victim Services provides victims of crime and trauma with support, information and referrals based on their needs. The intent is to ease the crisis and help them return to stability.

**Why should victims of crime and trauma contact us?**

Our support workers are empathetic listeners. They will give you information to help you make decisions that are best for you and your circumstances. Part of our role is to make sure you are treated fairly. You have rights under the *Alberta Victims of Crime Act*.

Please call or email to speak to a support worker. We can arrange to meet in your community.

**Wood Buffalo Victim Services**

**Phone: 780-788-4250**

**Toll Free: 1-888-788-4250**

**Email: [victim.services@rmwb.ca](mailto:victim.services@rmwb.ca)**

## For any questions, please contact Pulse!



**PULSE**

780-743-7000 • 1-800-973-9663  
rmwb.ca/pulse

Call. Submit online.  
Real answers every time, all the time.



Residents in rural communities can contact the Regional Municipality of Wood Buffalo 24/7 by contacting Pulse via the following:

- 780-743-7000
- 1-800-973-9663 (toll-free)

[www.rmwb.ca/pulse](http://www.rmwb.ca/pulse)



Individual \$10

Tiger (under 6) \$5

Family \$30

**Open Daily**

**9am-6pm**

Check in at Guest Services

**VISTA  
RIDGE**

# Walking Safety Tips



**Walk Facing Traffic:** If there is no sidewalk and you must walk on the side of the road, choose the side where you are facing oncoming traffic. This gives you the best chance to see traffic approaching closest to you and take evasive action if necessary.

**Cross Safely:** Look both ways before crossing any street. Make eye contact with any drivers who may be turning. Give them a wave. Make sure they see you.

**Walk Single File:** Unless you are on a sidewalk separate from the road, you should walk single file. This is especially important on a road with lots of curves. While it can be enjoyable to walk down the road two or three abreast chatting merrily, drivers don't expect it.

**Stay aware of bikes and runners:** Share the road and path with bikes and runners. Bike riders should alert you when approaching from behind with a bike bell or a "passing on the left/right." Listen for them.

**Be Visible:** Wear bright colors when walking in daytime. When walking at night wear light-colored clothing and reflective clothing or reflective vest to be visible.

**Hang Up and Eyes Up:** Chatting or texting while walking is as dangerous as doing that while driving. You are distracted and not as aware of your environment. You are less likely to recognize traffic danger, passing joggers and bikers or tripping hazards. Potential criminals can also see you as a distracted easy target.

**When walking your pet:** keep your pet on the side away from traffic so that they don't accidentally dart into the roadway.



## IMPORTANT CONTACT INFORMATION

<b>PULSE (MUNICIPAL SWITCH BOARD)</b>	1-800-973-9663 780-743-7000	PULSE@RMWB.CA	RMWB.CA/PULSE
<b>COMMUNITY CONTACTS:</b>		<b>SOCIAL MEDIA:</b>	
<b>RCMP</b>	780-788-4000	 @WOODBUFFALORURALCOMMUNITYCONNECTION   @RMWOODBUFFALO   @RMWOODBUFFALO	
<b>FISH &amp; WILDLIFE</b>	780-743-7200		
<b>HEALTH LINK</b>	811		
<b>ALL EMERGENCIES</b>	911		

To submit information to the newsletter please email:  
[Info.rr@rmwb.ca](mailto:Info.rr@rmwb.ca)

Deadline for **August** Newsletter submissions:  
**July 24, 2026**

# COMMUNITY EVENTS CALENDER

SUNDAY	MONDAY	TUESDAY	WEDNESDAY	THURSDAY	FRIDAY	SATURDAY
			<p>1</p>  <p>Happy Canada Day!</p>	2	<p>3</p> 	<p>4</p> <p><b>Hello Summer Festival 2026</b> SMS Equipment at Mac Island</p>
<p>5</p> <p><b>Hello Summer Festival 2026</b> SMS Equipment at Mac Island</p>	6	<p>7</p> <p>Fort McMurray Giants @ Legacy Dodge Field 7:05pm</p>	<p>8</p> <p>Fort McMurray Giants @ Legacy Dodge Field 7:05pm</p>	<p>9</p> <p>Fort McMurray Giants 7:05 – 10pm Legacy Dodge field</p>	<p>10</p> <p>Fort McMurray Giants Promo night Legacy Dodge field 7:05pm</p> 	<p>11</p> <p>Fort McMurray Giants Promo night Legacy Dodge field 6:05pm</p>
12	13	14	15	16	<p>17</p> 	18
19	20	<p>21</p> <p>Fort McMurray Giants @ Legacy Dodge field 7:05pm</p>	<p>22</p> <p>Fort McMurray Giants @ Legacy Dodge field 7:05pm</p>	<p>23</p> <p>Fort McMurray Giants 7:05 – 10pm Legacy Dodge field</p>	<p>24</p> <p>Fort McMurray Giants Promo night 7:05 – 10pm Legacy Dodge field</p>  <p>Newsletter submission deadline</p>	<p>25</p> <p>Fort McMurray Giants Legacy Dodge field 7:05pm</p>
<p>26</p> <p>Fort McMurray Giants Legacy Dodge field 7:05pm</p>	27	28	<p>29</p> <p>Fort McMurray Giants Legacy Dodge field 7:05pm</p>	<p>30</p> <p>Fort McMurray Giants Legacy Dodge field 7:05pm</p>	<p>31</p> <p>Fort McMurray Giants Legacy Dodge field 7:05pm</p> 	