

# COMMUNITY INVESTMENT PROGRAM

## ANNUAL IMPACT REPORT

JUNE 04, 2026



REGIONAL MUNICIPALITY  
OF WOOD BUFFALO

# LAND ACKNOWLEDGEMENT

The Regional Municipality of Wood Buffalo humbly acknowledges that the land on which we live, learn, work and play is Treat 8 Territory, the traditional lands of the Cree, Dene, and the unceded territory of the Métis.



**SERVED DEMOGRAPHICS INCLUDE:**

- Children (0 through 12 years of age)
- Youth (13 to 19 years)
- Adults (19 through 64 years of age)
- Seniors (65+ years of age)
- Families
- Community



Photo Credit: St. Aidan's House Society, 2025.



# Table of Contents

- Land Acknowledgement ..... 2
- Executive Summary ..... 5
- Community Investment Program..... 6
  - Program Grants..... 6
  - Family and Community Support Services Funding ..... 6
- Investing in Our Community: Past 5 years..... 7
- Funding Summary: 2025 Grant Cycle ..... 8
- 2025 CIP Funding Priorities..... 9
- Delivering the Community Investment Program..... 10
  - 2025 Output Highlights ..... 11
  - Community Impact Grant ..... 12
  - Community Impact Grant Streams..... 14
  - Community Sustaining Grant ..... 15
  - Subsidiary Grant ..... 17
  - Games Legacy Grant ..... 18
  - Community Capital Grant..... 19
  - Arts Culture and Heritage Grant ..... 19



# EXECUTIVE SUMMARY

In 2025, the Community Investment Program (CIP) continued to strengthen the wellbeing, resilience, and social connectedness of residents across the Regional Municipality of Wood Buffalo (RMWB) through strategic investment in community-based organizations and initiatives.

Over the past five years, the RMWB invested more than \$115.9 million through CIP, of which over \$16.7 million was granted in 2025 into programs, projects, services, events, and capital initiatives that enhanced quality of life throughout the region.

## 2025 highlights:

- 53 organizations funded
- 94 programs, projects, services, and events supported
- More than 46,000 residents participated in funded initiatives
- 3,390 volunteers contributed over 43,800 volunteer hours
- Funding supported all seven CIP funding priorities

The 2025 annual reporting cycle focused on strengthening outcome measurement and improving data accuracy to better reflect the unique number of residents served across the region.



# COMMUNITY INVESTMENT PROGRAM

The Community Partnerships & Initiatives Department delivers this program. CIP works in partnership with registered non-profit organizations delivering programs, projects, services, events or capital projects by providing grant funding, individualized one-on-one grant support, outcome measurement training, and resource sharing.

Funded organizations serve the needs of residents, build community capacity, and create social change.

Each CIP grant highlighted below enables social, cultural, and recreational programs, projects, services or events as well as amateur sport and artist development, and new community facilities.

## Program Grants

Community Impact Grants (CIG)

- Community Programs and Projects (CPP)
- Community Events (CE)

Community Sustaining Grant (SUS)

Subsidiary Grant (SUB)

Community Capital Grant (CAP)

Games Legacy Grant (GL)

Arts Culture and Heritage Grant (ARTS)

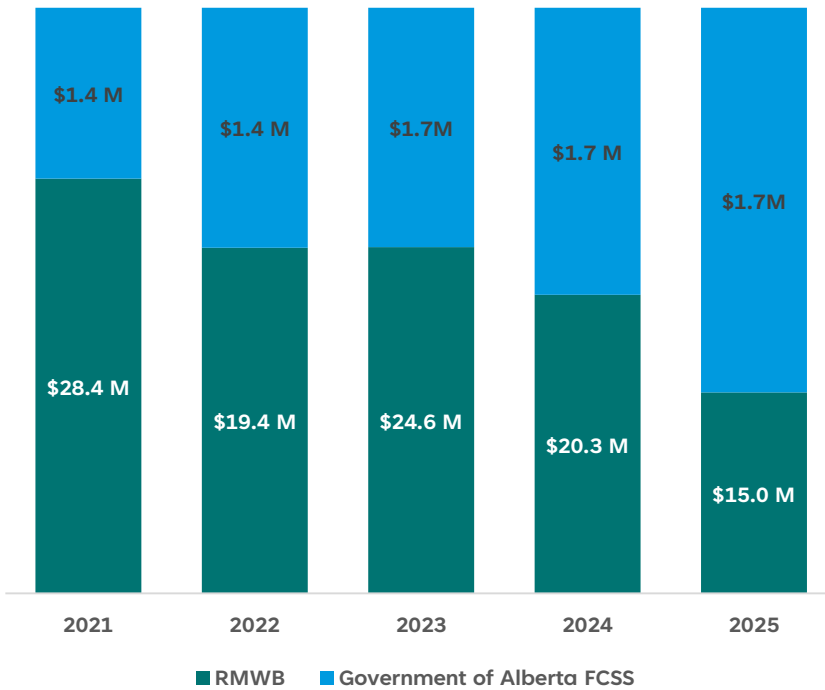
## Family and Community Support Services Funding

Family and Community Support Services (FCSS) is a unique funding partnership between the Government of Alberta and the RMWB that supports the design and delivery of preventive social initiatives to enhance the wellbeing of individuals, families and communities.

CIP administers and distributes FCSS funding to registered non-profit organizations and community groups whose programs and outcomes align with the FCSS Act and the FCSS Program Handbook. The FCSS funding is allocated through the Community Programs and Projects grant stream and Community Sustaining Grant.



# INVESTING IN OUR COMMUNITY: PAST 5 YEARS



**\$ 107.9 M**

granted through RMWB over the past 5 years

**\$ 7.9 M**

granted through Government of Alberta FCSS funding in recent 5 years.

 **\$41,821,090**

Subsidiary Grant

 **\$36,743,860\***

Community Sustaining Grant

 **\$10,573,868\***

Community Programs & Projects

 **\$25,189,145**

Community Capital Grant

 **\$424,391**      **\$860,423**

Community Events | New Events

 **\$150,000**

Artist Development Grant

 **\$175,189**

Games Legacy

\*Inclusive of FCSS Funding

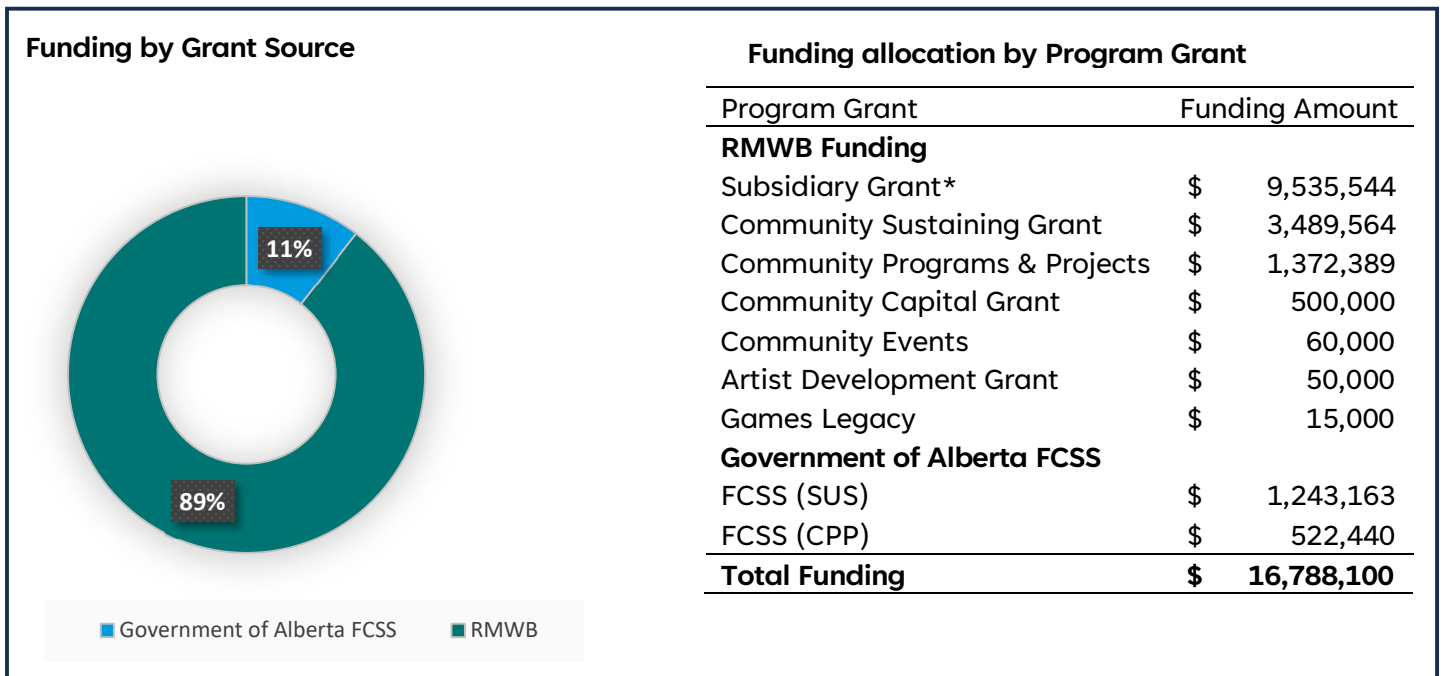


# FUNDING SUMMARY: 2025 GRANT CYCLE

In 2025, **\$16.7** million in grant funding was invested into the community through CIP.

Regional Municipality of Wood Buffalo (RMWB)	\$ 15,022,497
Government of Alberta FCSS	\$ 1,765,603

## Box 1: 2025 Summary of Funding



\*Includes Local Hero (HEM Program) that uses the Regional Emergency Services (RES) budget.



## 2025 CIP Funding Priorities

CIP currently uses 7 Council approved funding priorities to evaluate the impact of CIP grants.

Community Impact Grants are required to address at least one priority, while Community Sustaining Grants must contribute to at least three priorities.

**Table 1:** Number of funded organizations contributing to the CIP funding priorities by Program Grant.

Funding Priority	Community Impact Grant Funded	Community Sustaining Grant Funded
Accessibility, Inclusion and Belonging	2	10
Community Support Services and Wellness	15	9
Hosting Events/New Business and Visitors	0	3
Partnership and Collaboration	2	6
Rural and Indigenous Communities and Relationships	5	6
Social Participation	8	11
Value of Culture, Heritage and Regional Pride	2	3

**Accessibility, Inclusion and Belonging** – Includes initiatives that remove barriers, promote accessibility, and foster inclusive communities where everyone feels seen, valued, and empowered to participate and thrive.

**Community Support Services and Wellness** – Involves organizations supporting individuals through social programs that help build capacity in the community and ensure the needs, aspirations and priorities of residents are met.

**Hosting Events and/or New Business and Visitors** – Hosting events can showcase the regions strengths and attract a broader scope of activities and opportunities for residents and local businesses. Supporting organizations that work together to promote sustainable practices and ensure that citizens and businesses’ interests are provided with valued services.

**Partnership & Collaboration** – Supporting organizations that demonstrates working together to achieve common goals and celebrating differences. Fostering trust and collaboration between residents, community organizations, government and business.

**Rural & Indigenous Communities and Relationships** – Includes learning from and working with local Indigenous partners and communities to forge new relationships that build kinder, more supportive and more understanding communities.



**Social Participation** – Community programs, projects or events that support and engage individuals to enhance their social connection and well-being and promotes a sense of community.

**Value of Culture, Heritage and Regional Pride** – Increases public exposure to arts and culture, in the region and allows the opportunity to share and display the regions rich heritage, culture and identity. This includes the celebration of cultural diversity grounded in rich First Nations and Metis heritage which is broadened by residents from around the globe to give the region unique character.



Photo credit: Local HERO Foundation, 2025



# DELIVERING THE COMMUNITY INVESTMENT PROGRAM

3,390 volunteers contributed 43,800 volunteer hours represents \$ 1,130,040\*\* value to the community in volunteer time

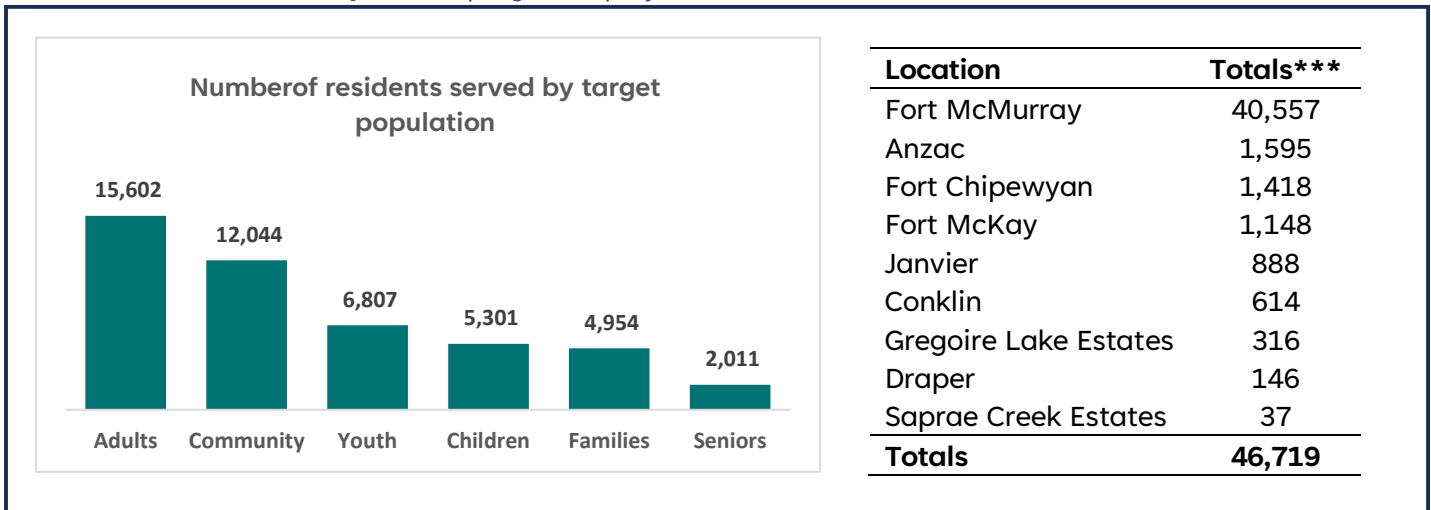
\*\*Calculated based on 2021 Alberta NPVs Wage and Salary average in Wood Buffalo-Cold Lake hourly wage of \$25.80

## Number of residents served

In 2025, efforts were focused on enhancing data accuracy to ensure that the total number of people served reported accurately reflected the permanent population of the region. According to the 2025 Municipal Census, the permanent population of the Regional Municipality of Wood Buffalo (excluding the shadow population) was 83,988.

Based on this, approximately 56% of the population accessed programs, projects, services or events funded through CIP. Key initiatives to enhance data accuracy included providing data management support to organizations to track unique individuals served, rather than cumulative instances of participation.

**Box 2:** Residents Served by funded programs, projects, events and services.



\*\*\*Note: The data reflects overlap among programs serving similar target populations in a single location. It also captures participation from individuals who reside in urban areas (Fort McMurray) but engage in programs in rural areas, along with shadow populations and individuals from reserves and neighboring communities who access these services.



## Community Impact Grant at a glance

**\$1,954,829**  
Funding Allocated



**20,487**  
Residents served



**3**  
Community Events



**41**  
Programs and Projects



**34** Organizations Funded

**1,934** volunteers

**22,133** volunteer hours = **\$571,031.4** \*\* value to community in volunteer hours

\*\*Calculated based on 2021 Alberta NPVs Wage and Salary average in Wood Buffalo-Cold Lake hourly wage of \$25.80 Retrieved from: [csw-alberta-wage-salary-survey-highlights-nonprofit-voluntary-sector-2021.pdf](#)



## Outcomes of the Community Impact Grants (CIG)



### Accessibility, Inclusion and Belonging

**Funding Impact:** 5% of CIG funded initiatives helped to build a warm, welcoming and supportive region by reducing barriers to opportunities, resources, and services, while promoting awareness.

**Impact on Residents:** 86% of participants reported positive changes and felt celebrated and included in the community.



### Community Support Services and Wellness

**Funding Impact:** 34% of CIG funded initiatives supported residents through social programs that help build capacity in the community and ensure the needs, aspirations and priorities of residents are met.

**Impact on Residents:** 92% of participants were positively impacted by the CIG funded activities that provided community support, services and wellness.



### Partnership and Collaboration

**Funding Impact:** 18% of funded CIG initiatives fostered trust and collaboration between residents, community organizations, government and business within the region.

**Impact on Residents:** 94% of participants were positively impacted through funded initiatives that promoted partnership and collaboration.



### Rural and Indigenous Communities and Relationships

**Funding Impact:** 11% of CIG funded initiatives contributed to building relationships in rural & Indigenous communities.

**Impact on Residents:** 99% of participants reported to be positively impacted by CIG funded activities that aimed to build relationships in rural & Indigenous communities.



### Social Participation

**Funding Impact:** 32% of CIG funded initiatives contributed to supporting and engaging individuals in order to enhance their social connection, and sense of belonging.

**Impact on Residents:** 90% of participants were positively impacted through CIG funded activities that enhanced social participation in the community.



# Community Impact Grant Streams

## Community Programs and Projects

<b>\$ 1,894,829</b> funding allocated	<b>31</b> organizations	<b>18,843</b> residents	<b>1,772</b> volunteers	<b>21,437</b> volunteer hours
--	----------------------------	----------------------------	----------------------------	----------------------------------

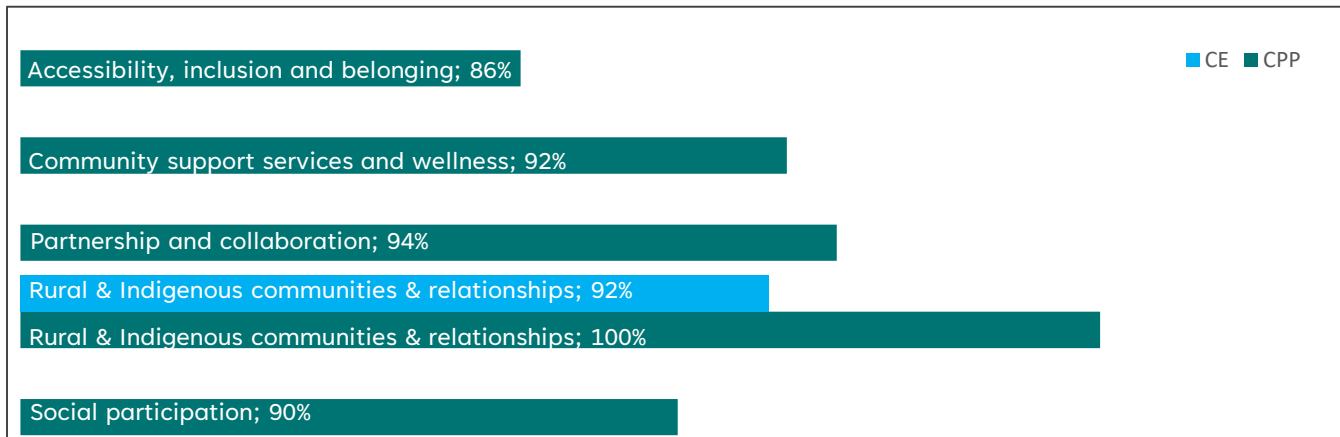
**\$ 537,640** value to community in volunteer hours

## Community Events

<b>\$60,000</b> funding allocated	<b>3</b> organizations	<b>1,644</b> residents	<b>162</b> volunteers	<b>696</b> volunteer hours
--------------------------------------	---------------------------	---------------------------	--------------------------	-------------------------------






**\$ 17,456** value to community in volunteer hours

Figure 1: Impact of the CPP and CE grant streams among residents.



## Community Sustaining Grant at a glance

The Community Sustaining Grant enabled deliver **42 programs and services** to residents across the region.

<p><b>\$ 4,732,727</b> Funding Allocated</p> 	<p><b>16</b> non-profit organizations</p> 	<p><b>17,125</b> residents served</p> 	<p><b>1,319</b> volunteers</p> 	<p><b>18,760</b> volunteer hours</p> 
--	---	---	---	--

**\$ 470,501** \*\* value to community in volunteer hours



## Outcomes of the Community Sustaining Grant

### Accessibility, Inclusion and Belonging

**Funding Impact: 21%** of Sustaining funded initiatives helped to build a warm, welcoming and supportive region by reducing barriers to opportunities, resources, and services while promoting awareness.

**Impact on Residents: 97%** of participants reported positive changes and felt celebrated and included in the community.

### Partnership and Collaboration

**Funding Impact: 14%** of Sustaining funded initiatives fostered trust and collaboration between residents, community organizations, government and business.

**Impact on Residents: 84%** of participants were positively impacted through Sustaining funded initiatives that promoted partnership and collaboration.

### Community Support Services and Wellness

**Funding Impact: 12%** of Sustaining funded initiatives supported residents through social programs that help build capacity in the community and ensure the needs, aspirations and priorities of residents are met.

**Impact on Residents: 85%** of participants reported positive changes and felt that their needs and priorities were met.

### Rural and Indigenous Communities and Relationships

**Funding Impact: 10%** of SUS funded initiatives contributed to building relationships in rural & Indigenous communities.

**Impact on Residents: 95%** of participants in rural and Indigenous communities reported positive changes due to activities and services of SUS funded initiatives.

### Hosting Events/New Business and Visitors

**Funding Impact: 12%** of Sustaining funded initiatives helped to showcase the region's strengths and attract a broader scope of activities and opportunities for residents and local businesses.

**Impact on Residents: 95%** of participants were positively impacted through Sustaining funded initiatives that contributed to hosting events, new business and visitors.

### Social Participation

**Funding Impact: 29%** of Sustaining funded initiatives contributed to supporting and engaging individuals in order to enhance their social connection, sense of belonging and wellbeing.

**Impact on Residents: 93%** of participants reported enhanced social connection and sense of belonging.

### Value of Culture, Heritage and Regional Pride

**Funding Impact: 2%** of Sustaining funded initiatives contributed to increased public exposure to arts and culture in the region and allowed the opportunity to share and display the region's rich heritage, culture and identity.

**Impact on Residents: 75%** of participants were positively impacted through Sustaining funded initiatives that contributed to the value of culture, heritage and regional pride.



## Subsidiary Grant



Photo credit: Walmart groundbreaking by Wood Buffalo Economic Development Corporation, 2025

**3** organizations funded to deliver **8** programs in the region

**\$8,285,544** total funding awarded

**8,975** residents participated in funded programs

**137** volunteers contributed their time to support delivery of funded programs

**2,907** volunteer hours contributed

**\$72,908** value to community in volunteer hours

## Outcomes of the Subsidiary Grants

### Community Support Services and Wellness

**Funding Impact:** **13%** of Subsidiary funded initiatives supported residents through social programs that help build capacity in the community and ensure the needs, aspirations and priorities of residents are met.

**Impact on Residents:** **89%** of participants were positively impacted by the funded activities.

### Hosting Events/ New Business and Visitors

**Funding Impact:** **50%** of Subsidiary funded initiatives helped to showcase the region's strengths and attract a broader scope of activities and opportunities for residents and local businesses.

**Impact on Residents:** **100%** of participants were positively impacted through Subsidiary funded initiatives.

### Partnership and Collaboration

**Funding Impact:** **25%** of Subsidiary funded initiatives fostered trust and collaboration between residents, community organizations, government and business within the region.

**Impact on Residents:** **100%** of participants were positively impacted through funded initiatives.

### Rural and Indigenous Communities and Relationships

**Funding Impact:** **13%** of SUB funded initiatives contributed to building relationships in rural & Indigenous communities.

**Impact on Residents:** **100%** of participants reported to be positively impacted by funded activities that aimed to build relationships in rural & Indigenous communities.



## Games Legacy Grant

A total of **\$ 15,000** was invested to support the development of local athletes and performers.

The Games Legacy Grant supports local athletes, performers, artists, teams, coaches, and instructors competing at a provincial, national, or international level.

In 2025, **4 individuals** and **8 organizations** were funded.

### Positive Impact of the Games Legacy Grant



Games Legacy Grant recipients reported enhanced personal, athletic, and artistic development through increased access to high-level training, competitions, and performance opportunities.

Recipients gained valuable exposure to elite performers in their respective fields, helping them strengthen technical skills, build confidence, increase motivation, and identify areas for growth. Recipients also highlighted increased community connection, improved teamwork, mental preparedness, and opportunities to share their talents locally through performances, competitions, and community events.

The grant further supported youth development by making specialized training and mentorship more accessible, while fostering long-term growth, resilience, and a stronger sense of belonging within the community.

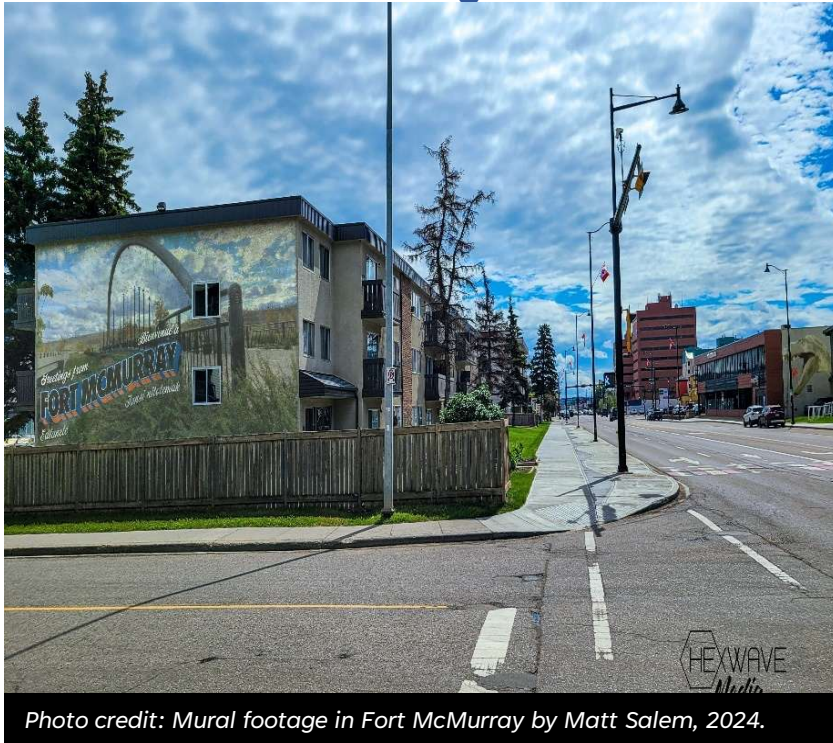


## Community Capital Grant

A total of **\$500,000** was invested through the Community Capital Grant in 2025, supporting **1 project**.

The Community Capital Grant provides funding to registered non-profit organizations to support the enhancement, development or renovation of public use facilities that are accessible, affordable, and inclusive.

## Arts Culture and Heritage Grant



**12** Individual Artists were funded

**\$50,000** total funding awarded

### **Impact of the grant on artists:**

**100%** felt more connected to the community

**100%** felt more supported to participate in arts, culture and heritage

**100%** agreed that as a result of receiving this grant, they had developed as a person and/or artist

**83%** would not have participated if they did not have the support of this grant

The grant had a significant impact on the artists, participants, and broader community by expanding access to affordable, culturally relevant, and skill-building arts experiences.

Artists were able to deliver free or low-cost programming, engage participants across generations, and introduce new creative practices such as painting, mosaic work, sewing, and cultural arts.

One of the funded programs reached 58 attendees and inspired requests for additional school-based sessions, while others supported weekly classes for children, multi-generational family workshops, and ongoing community interest through markets and social media growth.

The grant also enabled culturally grounded media work, including structured production planning for Elder interviews and community-led storytelling, strengthening cultural preservation, emotional wellbeing, and intergenerational connection.



Funding equipment purchases and access to equipment rentals created meaningful community benefits by increasing opportunities for affordable, hands-on arts-learning and cultural skill sharing.

An industrial sewing machine was loaned to six community members and supported free workshops for over 18 participants, while mosaic and art supply purchases enabled free or low-cost classes for 10–15 participants per session, including children and first-time artists.

Professional media equipment rentals also supported hands-on training for four community learners in filming, lighting, audio, and archival documentation skills.

Through the funded projects, participants gained practical creative skills, increased confidence, and access to artistic experiences that may not otherwise have been financially accessible without the support received from the Arts Culture and Heritage grant.



*Photo credit: Multicultural Association of Wood Buffalo, 2025*



FOR MORE INFORMATION

Jubilee Building, 6th Floor, 9909 Franklin Ave. Fort McMurray, AB T9H 2K4 PULSE 780-743-7000 | [www.rmwb.ca](http://www.rmwb.ca)

[Grants and Funding - Regional Municipality of Wood Buffalo \(rmwb.ca\)](#)