

COMMUNITY EMERGENCY MANAGEMENT PLAN (CEMP)



LOWER TOWNSITE




Contents

Risk Matrix	3
Community Hazards.....	4
Early Notification	4
Communications	4
Vulnerable Persons Registry Plan	5
Evacuation Plan Procedures	6
Emergency Social Services	8
Community Map	9



Risk Matrix

The Disaster Risk Matrix below represents the likelihood and severity of the hazards identified in the Regional Municipality of Wood Buffalo (RMWB). The arrows represent the potential influence of climate change on the risk/hazard event's likelihood.

 REGIONAL MUNICIPALITY OF WOOD BUFFALO			2020 RMWB Disaster Risk Matrix					Effective October 1, 2020
Risk Treatment Considerations								
	Extreme Risk	Eliminate/Immediate Risk Treatment. These are extreme risks, unacceptably high, driven by relatively high likelihood and consequences. Immediate risk treatment required. Monitor rigorously.						
	High Risk	Mitigate. These are high risks and warrant management action to reduce the likelihood or consequence of the risk. High priority risk treatment required. Monitor closely.						
	Moderate Risk	Accept or Mitigate to ALARP (as low as reasonably practicable). These are moderate risks and may be relatively well understood and managed through the application of control measures or counter measures. Some risk treatment required to reduce to lower levels. May develop mitigation controls and/or contingency plans.						
	Low Risk	Accept. Low risks are common place and should be monitored and accepted. Additional risk treatment not likely required.						
	Very Low Risk	Accept. Risk events do not require further consideration.						
Likelihood Ranking <i>Likelihood Ranking Score</i>			Very Low 1	Low 2	Moderate 3	High 4	Very High 5	
Likelihood Description			May only occur in exceptional circumstances. Has occurred in last 20 years	May occur and has occurred in last 10 years	Has occurred once within last 5 years	Has occurred twice in last 5 years	Has occurred 3 or more times in last 5 years	
Severity	Catastrophic	5 10+ Fatalities > 100 Displaced Major infrastructure damages Long-term economic, social, and environmental impact	Tailings Dam Dyke Failure →					
	Major	4 5 - 10 Fatalities 25 - 50 Displaced Major infrastructure damages Short-term & widespread economic, social, and environmental impact	Significant MVA Pandemic Influenza →	Major Pipeline Release	Ice Jam Flooding ?	WUI Wildfire →		
	Moderate	3 <5 Fatalities >10 Injured 10 - 25 Displaced Widespread infrastructure damages Long-term and localized economic, social, and environmental impact		Terrorist Attack Industrial Explosion	DG Release Fort Chip Access → Water Availability → Train Derailment Aviation Accident	Slope Instability →		
	Minor	2 0 Fatalities <10 Injured 5 - 10 Displaced Minor infrastructure damages Short-term and localized economic, social, and environmental impact	Labour Disruption	Utilities Disruption Critical Infrastructure →	Severe Winter Storm → H2S Release Major Structural Fire	Severe Summer Storm → Air Contamination	Cyber Attack	
	Insignificant	1 0 Fatalities <5 Displaced Minor infrastructure damages Minor economic, social, and environmental impact						



Community Hazards

The table below illustrates the top 3 community specific hazards based the 2020 Disaster Risk Matrix. The colour coding represents the risk/hazard event from Extreme Risk to Very Low risk.

Top 3 Hazards

Risk/Hazard Event	Severity	Likelihood	Climate Change Influence on Likelihood
Wildfire	Major	High	Increasing
River Flooding	Major	Moderate	Increasing
Dangerous Goods Release	Moderate	Moderate	N/A

Early Notification

It is critical to disseminate emergency information to residents. When possible, after the risk assessment, early notification should be given to identified vulnerable sectors allowing vulnerable populations the extra time needed to evacuate – i.e. during an evacuation alert through the Alertable app. Download the Alertable app to receive critical emergency alerts for your community.

Communications

It is important to stay up to date with the most current information during emergency incident/events. Follow, download and/or monitor the following:

Municipally Led Communications	<u>Alertable App</u> Download the Alertable app to receive critical emergency alerts for your community.
	<u>Social Media</u> <u>Facebook:</u> <ul style="list-style-type: none"> Regional Municipality of Wood Buffalo Wood Buffalo RURAL Community Connection RMWB Emergency Services <u>Twitter:</u> <ul style="list-style-type: none"> @RMWoodBuffalo @FM_EmergService <u>Municipal Website:</u> <ul style="list-style-type: none"> www.rmwb.ca <p>* "Information shall be shared from RMWB's social media post and website*."</p>
	<u>Alberta Emergency Alert</u>



Vulnerable Persons Registry Plan

Vulnerable Persons Registry	<p>Persons that qualify as vulnerable persons encompasses people who experience severe difficulty with:</p> <ul style="list-style-type: none"> • Mobility, vision or hearing. • Developmental/intellectual, cognitive, or mental health. • Residents who require electricity for life-sustaining equipment such as life support, oxygen, dialysis, etc. <p>For more detail on Vulnerable Persons Registry (VPR) visit Vulnerable Persons Registry - Regional Municipality of Wood Buffalo (rmwb.ca) and/or contact the RMWB VPR Coordinator through PULSE at 780-743-7000.</p>
Procedures	<ol style="list-style-type: none"> 1. VPR Coordinator communicates to the VPR registrant that they are being evacuated by an emergency responder. 2. If evacuation is required out of the community, VPR registrant will be transported to the Northern Lights Hospital or the designated Accommodation Facility, depending on the situation. 3. VPR Coordinator confirms that the VPR registrant has been safely evacuated and accommodated.
Evacuation	<p>In the event an evacuation ordered is issued by local authorities, the RMWB has identified the needed resources for a bus assisted evacuation. Specific resources will be allocated based on the unique needs of the emergency incident/event.</p>

COVID-19	<p>Due to COVID-19, any registrant on the Vulnerable Persons Registry (VPR) Program will:</p> <ul style="list-style-type: none"> • Reduce bus capacities to adhere to physical distancing (6 ft.) recommendations (as applicable), • Bus drivers and evacuees will wear masks (unless exempt), and • Be directly transported to their destination (Accommodation Facility) skipping the Registration Centre to reduce their risk of infection and spread of the virus.
-----------------	---



Evacuation Plan Procedures

Evacuation Plan (Bus-assisted)	<p>This is a bus-assisted evacuation plan designed for the community and not specific buildings (i.e. childcare facilities, schools, etc.) and it is based on:</p> <ul style="list-style-type: none"> • Approx. 1,100 residents requiring evacuation (10% of the population). <p>Evacuation procedures, when an evacuation order is given by local authorities':</p> <ul style="list-style-type: none"> • If you have your own vehicle, follow the evacuation route outlined in the community map out of your community. • If you do not have a vehicle, go to any bus stop along your community "Evacuation Bus Route" (see map) for pickup and transport to the designated Registration Centre/ muster point.
COVID-19	<p>Due to COVID-19, bus-assisted evacuation will:</p> <ul style="list-style-type: none"> • Reduce bus capacities to adhere to physical distancing (6 ft.) recommendations (as applicable), • Bus drivers and evacuees will wear masks (unless exempt), • When buses arrive at Registration Centre/muster point, evacuees must remain on buses, and • Emergency Social Services (ESS) volunteers and/or staff will register evacuees through online or drive-thru registration to not create mass gathering at Registration Centre and reduce the risk of infection and spread of the virus.
Evacuation Time	<p>Estimated evacuation times are as follows:</p> <ul style="list-style-type: none"> • Coordination, create a traffic control plan, staging of buses and establish a Registration Centre in the community- 2 hours. • Evacuate - 3 hours. • Approx. total evacuation time- 5 hours.
COVID-19	<p>Due to COVID-19 safety precautions, approximate evacuation times might increase.</p>
Muster Point	Jubilee Bus Stop
	Synchrude Sports & Wellness Centre
Bus Routes	Route 91



(see map)	Route 92
Evacuation Routes (All roads within the subdivision can be used as evacuation routes within the community. AB-63 is the main evacuation route out of the area. (see map)	Prairie Loop Boulevard
	<p>PRIMARY:</p> <ul style="list-style-type: none"> • Zone A (North of Franklin Avenue): Commence on Morrison Street or Hardin Street to AB-63. • Zone B (North of Franklin Avenue): Commence on Hospital Street, Tolen Drive, or Prairie Loop Boulevard to AB-63. • Zone C (South of Franklin Avenue): Commence on Morrison Street, Hardin Street, or Hospital Street to AB-63. • Zone D (South of Franklin Avenue): Commence on Hospital Street, Tolen Drive, or Prairie Loop Boulevard to AB-63. • Zone M: Commence on Morrison Street or Hardin Street to AB-63. • Zone W (Waterways): Commence on Tolen Drive to AB-63. • Zone G (Grayling Terrace): Commence on Abasand Drive to AB-63. <p>SECONDARY:</p> <ul style="list-style-type: none"> • Lower Townsite: Commence on Prairie Loop Boulevard and travel to Morrison Street, Hardin Street, Hospital Street, Tolen Drive or continue on Prairie Loop Boulevard to AB-63. • Waterways: Commence on Saline Creek Parkway to Prairie Loop Boulevard to AB-63. • Grayling Terrace: Commence on 'Grayling Terrace Trail' to AB-63. <p>* Note: Grayling Terrace Trail' is gated and is a right turn only onto AB-63*.</p>

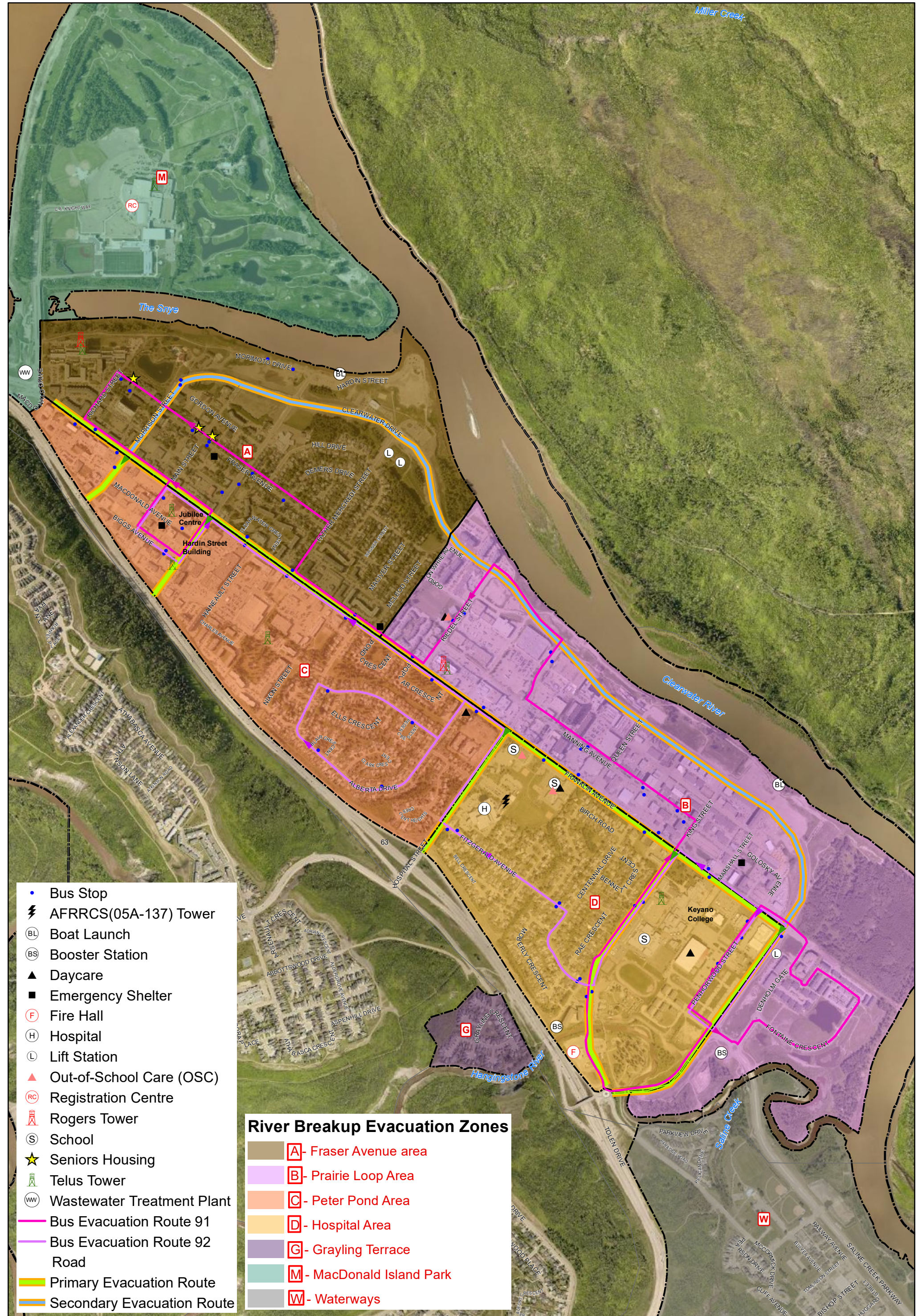


Emergency Social Services

Accommodation Facilities	Establishment and locations of Accommodation Facilities will depend on the complexities of the disaster event and the location of the affected community. Emergency Social Services (ESS) has identified and made arrangements with several facilities that are suitable for use depending on the nature and location of the disaster event. See “Emergency Social Services Plan” and “Pet Care Plan” for a detailed overview of ESS operating procedures.
---------------------------------	--

Registration Centre's					
Fort McMurray	Resource	Location	Registration Centre	Pre-positioned supplies	Trained Volunteers
	MacDonald Island Rec Centre	1 C.A. Knight Way	YES	YES	YES
	Frank Lacroix Arena	155 Beaconwood Road	YES	NO	YES
	Royal Canadian Legion	9317 Huggard Street	YES	NO	YES
South Resources					
Anzac	Resource	Location	Registration Centre	Pre-positioned supplies	Trained Volunteers
	Anzac Recreational Facility	237 Stony Mountain Road	YES	YES	YES
Conklin	Resource	Location	Registration Centre	Pre-positioned supplies	Trained Volunteers
	Conklin Multi-Plex	244 Father Mercredi's Trail	YES	YES	NO

COVID-19	Due to COVID-19 safety precautions, Emergency Social Services (ESS) volunteers and/or staff will register evacuees through online or drive-thru registration to not create mass gathering at Registration Centre and reduce the risk of infection and spread of the virus.
-----------------	--



LOWER TOWN SITE

