

# COMMUNITY EMERGENCY MANAGEMENT PLAN (CEMP)



## JANVIER




## Contents

Risk Matrix .....	3
Community Hazards.....	4
Early Notification .....	4
Community Identified Communications.....	4
Municipal Communications .....	5
Languages Spoken.....	5
Vulnerable Persons Registry Plan .....	6
Evacuation Plan Procedures .....	7
Emergency Social Services .....	10
Community Map .....	12



## Risk Matrix

The Disaster Risk Matrix below represents the likelihood and severity of the hazards identified in the Regional Municipality of Wood Buffalo (RMWB). The arrows represent the potential influence of climate change on the risk/hazard event's likelihood.

			2020 RMWB Disaster Risk Matrix					Effective October 1, 2020	
Risk Treatment Considerations									
	Extreme Risk		Eliminate/Immediate Risk Treatment. These are extreme risks, unacceptably high, driven by relatively high likelihood and consequences. Immediate risk treatment required. Monitor rigorously.						
	High Risk		Mitigate. These are high risks and warrant management action to reduce the likelihood or consequence of the risk. High priority risk treatment required. Monitor closely.						
	Moderate Risk		Accept or Mitigate to ALARP (as low as reasonably practicable). These are moderate risks and may be relatively well understood and managed through the application of control measures or counter measures. Some risk treatment required to reduce to lower levels. May develop mitigation controls and/or contingency plans.						
	Low Risk		Accept. Low risks are common place and should be monitored and accepted. Additional risk treatment not likely required.						
	Very Low Risk		Accept. Risk events do not require further consideration.						
Likelihood Ranking Likelihood Ranking Score			Very Low 1		Low 2	Moderate 3	High 4	Very High 5	
Likelihood Description			May only occur in exceptional circumstances. Has occurred in last 20 years		May occur and has occurred in last 10 years	Has occurred once within last 5 years	Has occurred twice in last 5 years	Has occurred 3 or more times in last 5 years	
Severity	Catastrophic	5	10+ Fatalities > 100 Displaced Major infrastructure damages Long-term economic, social, and environmental impact	Tailings Dam Dyke Failure →					
	Major	4	5 - 10 Fatalities 25 - 50 Displaced Major infrastructure damages Short-term & widespread economic, social, and environmental impact	Significant MVA Pandemic Influenza →	Major Pipeline Release	Ice Jam Flooding ?	WUI Wildfire →		
	Moderate	3	<5 Fatalities >10 Injured 10 - 25 Displaced Widespread infrastructure damages Long-term and localized economic, social, and environmental impact		Terrorist Attack Industrial Explosion	DG Release Fort Chip Access → Water Availability → Train Derailment Aviation Accident	Slope Instability →		
	Minor	2	0 Fatalities <10 Injured 5 - 10 Displaced Minor infrastructure damages Short-term and localized economic, social, and environmental impact	Labour Disruption	Utilities Disruption Critical Infrastructure → Failure	Severe Winter Storm → H2S Release Major Structural Fire	Severe Summer Storm → Air Contamination	Cyber Attack	
	Insignificant	1	0 Fatalities <5 Displaced Minor infrastructure damages Minor economic, social, and environmental impact						



## Community Hazards

The table below illustrates the top 3 community specific hazards based the 2020 Disaster Risk Matrix. The colour coding represents the risk/hazard event from Extreme Risk to Very Low risk.

### Top 3 Hazards


Risk/Hazard Event	Severity	Likelihood	Climate Change Influence on Likelihood
Wildfire	Major	High	Increasing
Dangerous Goods Release	Moderate	Moderate	N/A
Critical Infrastructure Failure	Minor	Low	N/A

## Early Notification

It is critical to disseminate emergency information to residents. When possible, after the risk assessment, early notification should be given to identified vulnerable sectors allowing vulnerable populations the extra time needed to evacuate – i.e. during an evacuation alert through the Alertable app. Download the Alertable app to receive critical emergency alerts for your community.

## Community Identified Communications

It is critical to disseminate emergency information to residents. The following table illustrates the best to least useful communication method identified by the community of Janvier:

<b>BEST</b>  <b>LEAST USEFUL</b>	<b><u>Door-to-Door</u></b>
	<b><u>Landline/Cell Phone (Call Tree)</u></b>
	<b><u>Facebook</u></b> <ul style="list-style-type: none"> <li>• “Janvier Community Information Page”</li> <li>• “Chipewyan Prairie First Nation (CPFN)”</li> </ul> <p>*Information shall be shared onto community Facebook accounts from RMWB’s social media post*.</p>
	<b><u>News Release – Broadcast (Radio and Television)</u></b>





## Municipal Communications

<b>Municipally Led Communications</b>	<b><u>Alertable App</u></b> Download the Alertable app to receive critical emergency alerts for your community.
	<b><u>Social Media</u></b> <u>Facebook:</u> <ul style="list-style-type: none"> <li>Regional Municipality of Wood Buffalo (Page)</li> <li>Wood Buffalo RURAL Community Connection (Page)</li> <li>RMWB Emergency Services (Page)</li> </ul> <u>Twitter:</u> <ul style="list-style-type: none"> <li>@RMWoodBuffalo</li> <li>@FM_EmergService</li> </ul> <u>Municipal Website:</u> <ul style="list-style-type: none"> <li>www.rmwb.ca</li> </ul> * "Information shall be shared from RMWB's social media post and website*."
	<b><u>Alberta Emergency Alert</u></b>

## Languages Spoken

<b>Languages Spoken</b>	Primary: <b>English.</b>
	Secondary: <b>Dene.</b>



## Vulnerable Persons Registry Plan

<b>Vulnerable Persons Registry</b>	<p>Persons that qualify as vulnerable persons encompasses people who experience severe difficulty with:</p> <ul style="list-style-type: none"> <li>• Mobility, vision or hearing.</li> <li>• Developmental/intellectual, cognitive, or mental health.</li> <li>• Residents who require electricity for life-sustaining equipment such as life support, oxygen, dialysis, etc.</li> </ul> <p>For more detail on Vulnerable Persons Registry (VPR) visit <a href="https://rmwb.ca/VulnerablePersonsRegistry">Vulnerable Persons Registry - Regional Municipality of Wood Buffalo (rmwb.ca)</a> and/or contact the RMWB VPR Coordinator through PULSE at <b>780-743-7000</b>.</p>
<b>Procedures</b>	<ol style="list-style-type: none"> <li>1. VPR Coordinator communicates to the VPR registrant that they are being evacuated by an emergency responder.</li> <li>2. If evacuation is required out of the community, VPR registrant will be taken to the designated location for further transportation out.</li> <li>3. Upon arriving in Fort McMurray, they will be transported to the Northern Lights Hospital or the designated Accommodation Facility, depending on the situation (<b>if applicable</b>).</li> <li>4. VPR Coordinator confirms that the VPR registrant has been safely evacuated and accommodated.</li> </ol>
<b>Evacuation</b>	<p>In the event an evacuation ordered is issued by local authorities, the RMWB has identified the needed resources for a bus assisted evacuation. Specific resources will be allocated based on the unique needs of the emergency incident/event.</p>
<b>Muster Point</b>	<p>Janvier Municipal Office.</p> <p><b>*Note:</b> Additional muster points can be located at multi-plex (<b>if required</b>) *.</p>

<b>COVID-19</b>	<p>Due to COVID-19, any registrant on the Vulnerable Persons Registry (VPR) Program will:</p> <ul style="list-style-type: none"> <li>• Reduce bus and aircraft capacities to adhere to physical distancing (6 ft.) recommendations (as applicable),</li> <li>• Bus drivers and evacuees will wear masks (unless exempt), and</li> <li>• Be directly transported to their destination (Accommodation Facility) skipping the Registration Centre to reduce their risk of infection and spread of the virus.</li> </ul>
-----------------	--



## Evacuation Plan Procedures

<b>Evacuation Plan (Bus-assisted)</b>	<p>The following evacuation plan is a bus-assisted evacuation, designed for the community and not specific buildings (i.e. schools, arena's, etc.).</p> <p>Total: Evacuation of Approx. 128 residents requiring evacuation assistance:</p> <ul style="list-style-type: none"> <li>• Approx. 28 residents on the HAMLET (20% of the population).</li> <li>• Approx. 100 residents on the RESERVE.</li> </ul> <p>Evacuation procedures, when an evacuation order is given by local authorities':</p> <ul style="list-style-type: none"> <li>• If you have your own vehicle, follow the evacuation route outlined in the community map to the designated Registration Centre/ muster point.</li> <li>• If you do not have a vehicle, go to any point on "Evacuation Bus Route" (see map) for pickup and transport to the designated Registration Centre/ muster point.</li> <li>• From the Registration Centre/ muster point residents will be organized for transport out of the community (if required).</li> </ul>
<b>COVID-19</b>	<p>Due to COVID-19, bus-assisted evacuation will:</p> <ul style="list-style-type: none"> <li>• Reduce bus capacities to adhere to physical distancing (6 ft.) recommendations (as applicable),</li> <li>• Bus drivers and evacuees will wear masks (unless exempt),</li> <li>• When buses arrive at Registration Centre/muster point evacuees must remain on buses, and</li> <li>• Emergency Social Services (ESS) volunteers and/or staff will register evacuees through online or drive-thru registration to not create mass gathering at Registration Centre and reduce the risk of infection and spread of the virus.</li> </ul>
<b>Evacuation Time to Muster Point</b>	<p>Estimated evacuation times are as follows:</p> <ul style="list-style-type: none"> <li>• Create a traffic control plan, coordinate resources and stage resources -3 hours.</li> <li>• Evacuate to muster point- 2 hours.</li> <li>• Approx. total evacuation time- 5 hours.</li> </ul>
<b>COVID-19</b>	<p>Due to COVID-19 safety precautions, approximate evacuation times might increase.</p>
<b>Muster Point</b>	<p>Janvier Municipal Office.</p> <p><b>*Note:</b> Additional muster points can be located at multi-plex. (If required) *</p>



<b>Bus Routes</b> (see map)	HAMLET: Route A and B.
	Specialized bus route: As determined by specialized residents needs and locations.
<b>Evacuation Routes</b>	PRIMARY: Commence on Nokohoo Road. Travel Nokohoo Road to AB-881.
	<b>*Note:</b> All roads within the subdivision can be used as evacuation routes within the community. AB-881 is the main route out of the area. (see map) *

<b>Evacuation Plan</b> <b>(Airplane-assisted)</b>	<p>The following evacuation plan is for an airplane-assisted evacuation: Total evacuation of approx. 128 residents requiring evacuation assistance to the muster point:</p> <ul style="list-style-type: none"> <li>Approx. 28 residents on the HAMLET (20% of the population).</li> <li>Approx. 100 residents on the RESERVE.</li> </ul> <p>Total evacuation of approx. 533 residents requiring evacuation by plane on the Hamlet and First Nation Reserve:</p> <ul style="list-style-type: none"> <li>141 residents on HAMLET.</li> <li>392 residents on the RESERVE.</li> </ul> <p>Procedures:</p> <ul style="list-style-type: none"> <li>At the muster point (Janvier Municipal Office), flight capacity will be identified,</li> <li>Janvier Airstrip resource(s) shall organize groups of residents to be put onto buses to the airstrip</li> <li>When air resources arrive, evacuees can be loaded onto a bus and taken to the airstrip by airstrip resource escort for plane evacuation transport out of the community.</li> </ul> <p><b>*Note:</b> Evacuees <b>MUST</b> go to the muster point first (do not go directly to the airstrip). *</p>
	<p><b>Evacuation Routes</b> (‘Evacuation Routes’ in this context is to the muster point)</p> <p>PRIMARY: Commence on Nokohoo Road. Travel Nokohoo Road to AB-881.</p> <p><b>*Note:</b> All roads within the subdivision can be used as evacuation routes within the community. AB-881 is the main route out of the area. (see map) *</p>





<p><b>COVID-19</b></p>	<p>Due to COVID-19, airplane-assisted evacuation will:</p> <ul style="list-style-type: none"> <li>• Reduce bus and airplane capacities to adhere to physical distancing (6 ft.) recommendations (as applicable),</li> <li>• Pilots, bus drivers, and evacuees will wear masks (unless exempt),</li> <li>• Upon arrival to Fort McMurray, evacuees will be guided to buses to be transported to Registration Centre or Accommodation Facilities,</li> <li>• Evacuees must remain on buses, and</li> <li>• Emergency Social Services (ESS) volunteers and/or staff will register evacuees through online or drive-thru registration to not create mass gathering at Registration Centre and reduce the risk of infection and spread of the virus.</li> </ul>
------------------------	--

<p><b>Muster Point</b></p>	<p>Janvier Municipal Office. *Note: Additional muster points can be located at multi-plex. (If required) *</p>
<p><b>Bus Routes</b> (see map)</p>	<p>HAMLET: Route A and B. Specialized bus route: As determined by specialized residents needs and locations.</p>
<p><b>Evacuation Time</b></p>	<p>Estimated evacuation times are as follows:</p> <ul style="list-style-type: none"> <li>• Evacuate with staged resources to the muster point- <b>2 hours</b>.</li> <li>• Coordinate and transport further resources to the Janvier Air Strip – <b>2 hours</b>.</li> <li>• Approx. travel time for each shuttle trip to the airstrip -<b>10 min</b> (including return and <b>not including traffic, loading and unloading time</b>).</li> <li>• Approx. flight time to Fort McMurray- <b>30 min to 45 min</b> (including return, <b>not including fuel, loading and unloading time</b>).</li> </ul>



## Emergency Social Services

**Accommodation  
Facilities**

Establishment and locations of Accommodation Facilities will depend on the complexities of the disaster event and the location of the affected community. Emergency Social Services (ESS), has identified and made arrangements with several facilities that are suitable for use depending on the nature and location of the disaster event. See “Emergency Social Services Plan” and “Pet Care Plan” for a detailed overview of ESS operating procedures.

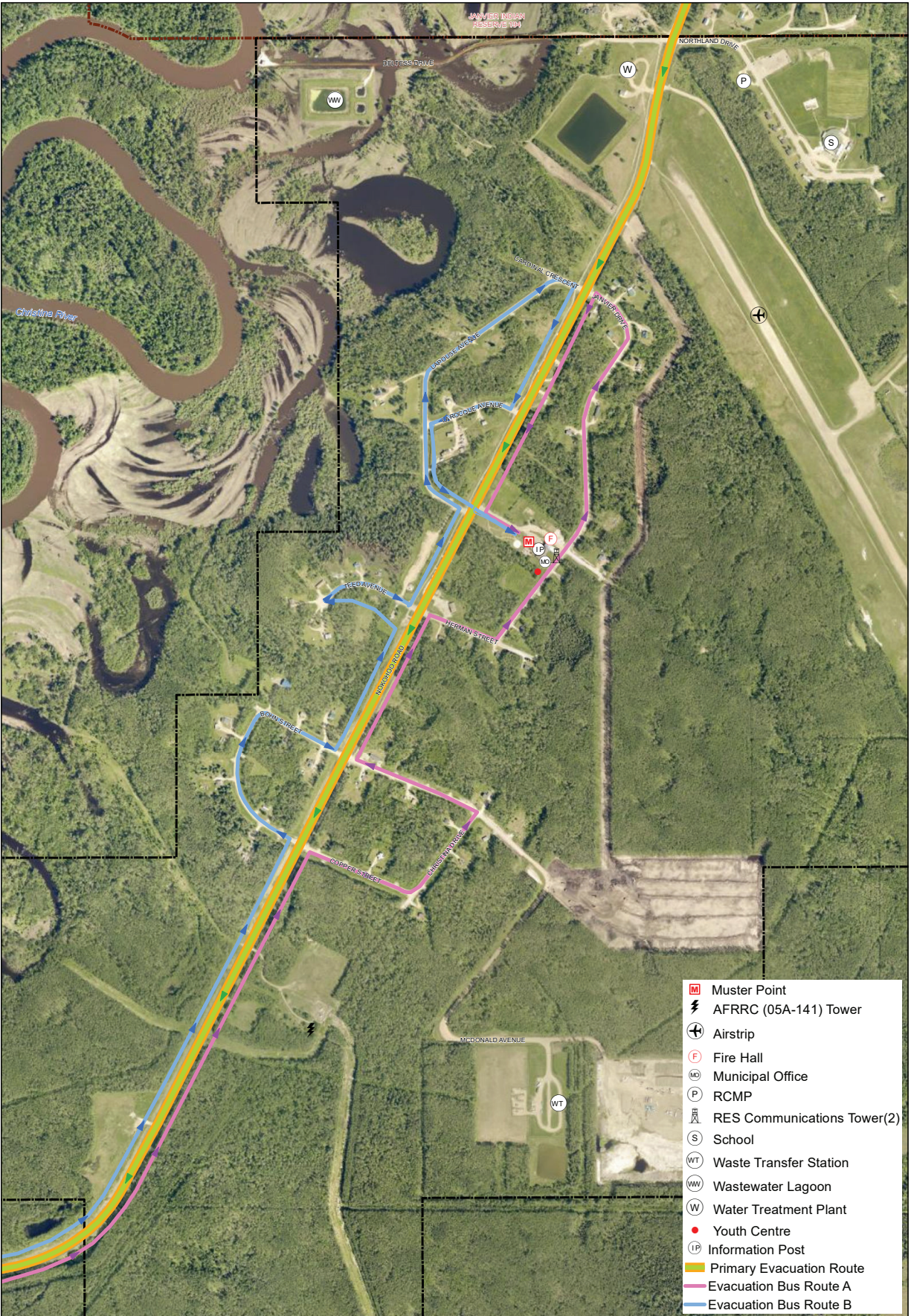
Registration Centre's					
Janvier	Resource	Location	Registration Centre	Pre-positioned supplies	Trained Volunteers
	Janvier Municipal Office	Janvier, AB TOP 1GO	YES	YES	NO
North Resources					
Anzac	Resource	Location	Registration Centre	Pre-positioned supplies	Trained Volunteers
	Anzac Recreation Centre	237 Stony Mountain Road	YES	YES	YES
Fort McMurray	Resource	Location	Registration Centre	Pre-positioned supplies	Trained Volunteers
	MacDonald Island Rec Centre	1 C.A. Knight Way	YES	YES	YES
	Royal Canadian Legion	9317 Huggard Street	YES	NO	YES
	Frank Lacroix Arena	155 Beaconwood Road	YES	NO	YES
South Resources					
Conklin	Resource	Location	Registration Centre	Pre-positioned supplies	Trained Volunteers
	Conklin Multi-Plex	244 Father Mercredi's Trail	YES	YES	NO



## **COVID-19**

Due to COVID-19 safety precautions, Emergency Social Services (ESS) volunteers and/or staff will register evacuees through online or drive-thru registration to not create mass gathering at Registration Centre and reduce the risk of Infection and spread of the virus.





**JANVIER**



0 125 250 375 500  
Meters



TICK54279

Map produced by the Geographic Information Systems Group on March 12, 2021